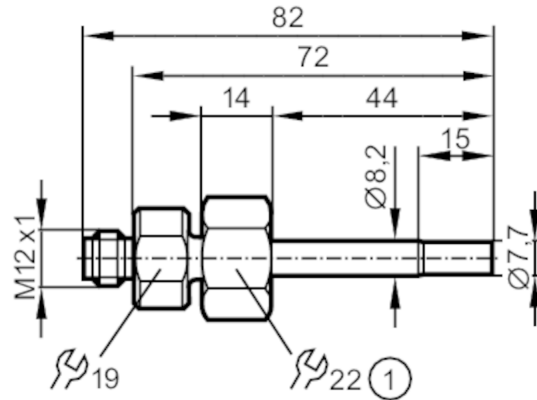




Flow sensor for connection to an evaluation unit

SFD10ABB /US-100



Product characteristics

Probe length L	[mm]	45
Process connection		M18 x 1,5 internal thread

Application

Application		high-temperature range
Media		Liquids; Gases
Medium temperature	[°C]	-25...80
Pressure rating	[bar]	30

Liquids

Application		high-temperature range
Medium temperature	[°C]	-25...80

Gases

Medium temperature	[°C]	-25...80
--------------------	------	----------

Electrical data

Connection to control monitor		VS3000
-------------------------------	--	--------

Measuring/setting range

Probe length L	[mm]	45
----------------	------	----

Liquids

Setting range	[cm/s]	3...300
Greatest sensitivity	[cm/s]	3...60

Gases

Setting range	[cm/s]	200...3000
Greatest sensitivity	[cm/s]	200...800

Accuracy / deviations

Temperature gradient	[K/min]	300
----------------------	---------	-----

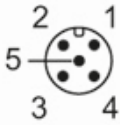
Response times

Response time	[s]	1...10
---------------	-----	--------



Flow sensor for connection to an evaluation unit

SFD10ABB /US-100

Liquids		
Response time	[s]	1...10
Gases		
Response time	[s]	1...10
Operating conditions		
Protection		IP 67
Tests / approvals		
Shock resistance	DIN IEC 68-2-27	40 g (11 ms)
Vibration resistance	DIN IEC 68-2-6	10 g (55...2000 Hz)
MTTF	[ANN]	8213
Mechanical data		
Weight	[g]	87.5
Housing		for adapter
Materials		stainless steel (1.4404 / 316L)
Materials (wetted parts)		stainless steel (1.4404 / 316L); O-ring: FKM 80 Shore A
Process connection		M18 x 1,5 internal thread
Remarks		
Pack quantity		1 pcs.
Electrical connection		
Connector: 1 x M12; coding: A; Maximum cable length: 100 m		
		

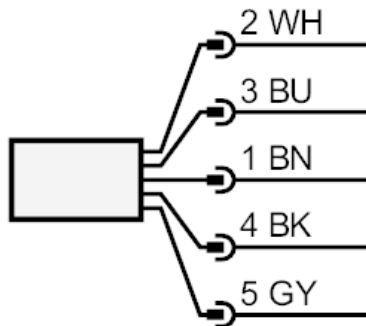
SF0537



Flow sensor for connection to an evaluation unit

SFD10ABB /US-100

Connection



BN =	Core colours :	brown
BU =		blue
BK =		black
WH =		white
GY =		grey