



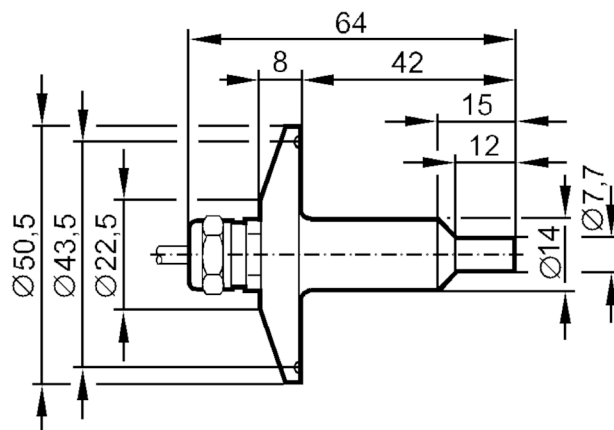
## Flow sensor for connection to an evaluation unit

SFG14ZBB

Article no longer available - archive entry

Alternative articles: SF0516

When selecting an alternative article and accessories please note that technical data may differ!



## Product characteristics

Process connection	Clamp DN25 ISO 2852
--------------------	---------------------

## Application

Application	high-temperature range; hygienic applications
Pressure rating [bar]	30

## Liquids

Application	high-temperature range; hygienic applications
Medium temperature [°C]	0...120

## Gases

Medium temperature [°C]	0...100
-------------------------	---------

## Electrical data

Connection to control monitor	VS 0200
-------------------------------	---------

## Measuring/setting range

## Liquids

Setting range [cm/s]	3...300
Greatest sensitivity [cm/s]	3...60

## Gases

Setting range [cm/s]	200...2000
Greatest sensitivity [cm/s]	200...800

## Accuracy / deviations

Temperature gradient [K/min]	15
------------------------------	----

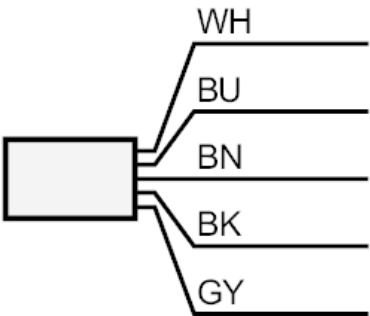
# SF0505



## Flow sensor for connection to an evaluation unit

SFG14ZBB

Response times		
Response time	[s]	1...10
Liquids		
Response time	[s]	1...10
Gases		
Response time	[s]	1...10
Operating conditions		
Protection		IP 67
Mechanical data		
Materials		stainless steel (1.4571/316Ti )
Materials (wetted parts)		stainless steel (1.4571/316Ti )
Process connection		Clamp DN25 ISO 2852
Remarks		
Pack quantity		1 pcs.
Electrical connection		
Cable: 2 m, silicone; Maximum cable length: 100 m; 5 x 0.34 mm²		
Connection		



	Core colours :
BN =	brown
BU =	blue
BK =	black
WH =	white
GY =	grey