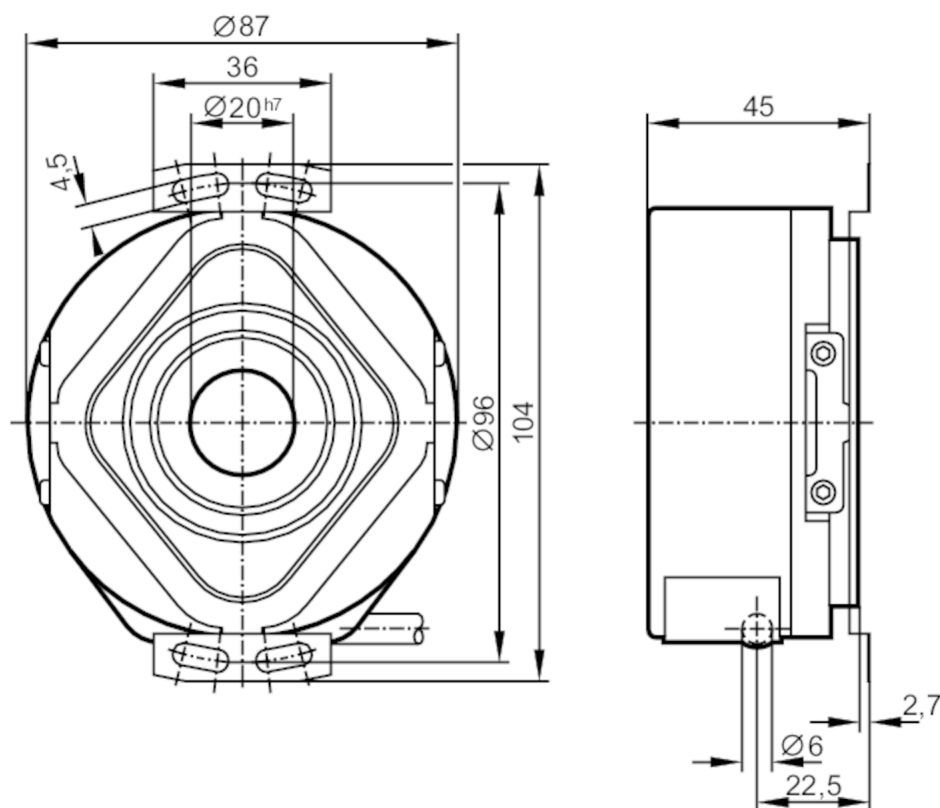


## Incremental encoder with hollow shaft

RP-1000-I24/N10

Article no longer available - archive entry



### Product characteristics

Resolution	1000 resolution
Shaft design	continuous hollow shaft
Shaft diameter [mm]	20

### Electrical data

Operating voltage [V]	10...30 DC
Current consumption [mA]	< 150

### Outputs

Electrical design	HTL
Max. current load per output [mA]	50
Switching frequency [kHz]	160
Phase difference A and B [°]	90

### Measuring/setting range

Resolution	1000 resolution
------------	-----------------

### Operating conditions

Ambient temperature [°C]	-30...50
Note on ambient temperature	higher temperature upon request for the diagram see the installation instructions
Storage temperature [°C]	-30...100



## Incremental encoder with hollow shaft

RP-1000-I24/N10

Max. relative air humidity [%]	98
Protection	IP 64

### Tests / approvals

Shock resistance	100 g (6 ms)
Vibration resistance	10 g (55...2000 Hz)

### Mechanical data

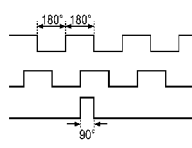
Dimensions [mm]	Ø 87 / L = 45
Materials	aluminium
Max. revolution, mechanical [U/min]	6000
Max. starting torque [Nm]	10
Reference temperature torque [°C]	20
Shaft design	continuous hollow shaft
Shaft diameter [mm]	20
Shaft fit	H7
Shaft material	steel (1.4104)
Installation depth of shaft [mm]	10
Max. axial shaft misalignment [mm]	1,5

### Electrical connection

Cable: 1 m, PUR; radial

brown	A
green	A inverted
grey	B
pink	B inverted
red	0 index
black	0 index inverted
blue	10...30V sensor
white	0V sensor
brown/green	10...30V (Up)
white/green	0V (Un)
lilac	failure inverted
screen	housing

### Diagrams and graphs

Pulse diagram	 <p>direction of rotation clockwise (looking at the shaft)</p>
---------------	--