



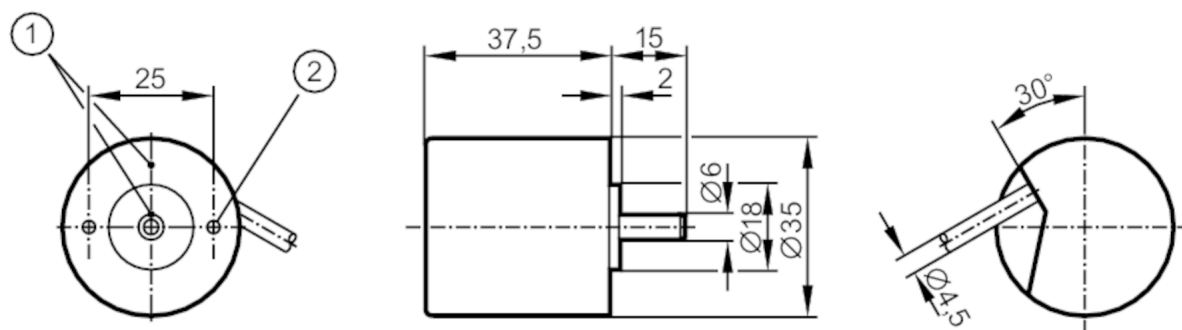
## Incremental encoder with solid shaft

RB-0200-I05/L2

Article no longer available - archive entry

Alternative articles: RB3500

When selecting an alternative article and accessories please note that technical data may differ!



- 1 reference mark  
2 M3 Depth 5 mm



### Product characteristics

Resolution	200 resolution
Shaft design	solid shaft
Shaft diameter [mm]	6

### Application

Function principle	incremental
--------------------	-------------

### Electrical data

Operating voltage tolerance [%]	10
Operating voltage [V]	5 DC
Current consumption [mA]	120

### Outputs

Electrical design	TTL
Max. current load per output [mA]	20
Switching frequency [kHz]	300
Phase difference A and B [°]	90

### Measuring/setting range

Resolution	200 resolution
------------	----------------

### Operating conditions

Ambient temperature [°C]	-30...100
Max. relative air humidity [%]	75; (briefly: 95 %)
Protection	IP 64

### Tests / approvals

Shock resistance	100 g (6 ms)
Vibration resistance	10 g (55...2000 Hz)



## Incremental encoder with solid shaft

RB-0200-I05/L2

Mechanical data		
Weight	[g]	263.9
Dimensions	[mm]	Ø 35 / L = 52.5
Materials		aluminium
Max. revolution, mechanical	[U/min]	10000
Max. starting torque	[Nm]	1
Reference temperature	[°C]	20
Shaft design		solid shaft
Shaft diameter	[mm]	6
Shaft material		steel (1.4104)
Max. shaft load axial (at the shaft end)	[N]	5
Max. shaft load radial (at the shaft end)	[N]	10

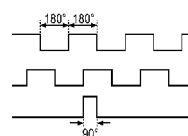
## Electrical connection

Cable: 2 m, PUR; radial, can also be used axially

brown	A
green	A inverted
grey	B
pink	B inverted
red	0 index
black	0 index inverted
brown/green	L+ (Up)
white/green	L- 0 V (Un)
blue	L+ sensor
white	L- 0 V sensor
lilac	failure inverted
screen	housing

## Diagrams and graphs

Pulse diagram



direction of rotation clockwise (looking at the shaft)