



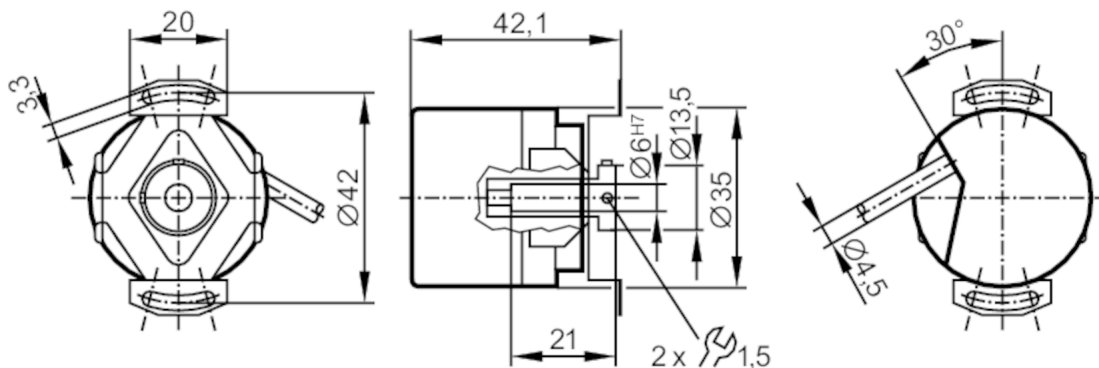
Incremental encoder with hollow shaft

RA-0500-I24/N6

Article no longer available - archive entry

Alternative articles: RA3101 + EVC546

When selecting an alternative article and accessories please note that technical data may differ!



Product characteristics

Resolution	500 resolution
Shaft design	hollow shaft open to one side
Shaft diameter [mm]	6

Electrical data

Operating voltage [V]	10...30 DC
Current consumption [mA]	150

Outputs

Electrical design	HTL
Max. current load per output [mA]	50
Switching frequency [kHz]	160
Type of short-circuit protection	< 60 s
Phase difference A and B [°]	90

Measuring/setting range

Resolution	500 resolution
------------	----------------

Operating conditions

Ambient temperature [°C]	-30...70
Max. relative air humidity [%]	75; (briefly: 95 %)
Protection	IP 64

Tests / approvals

Shock resistance	100 g (6 ms)
Vibration resistance	10 g (55...2000 Hz)

Mechanical data

Weight [g]	490
Dimensions [mm]	Ø 35 / L = 42.1



Incremental encoder with hollow shaft

RA-0500-I24/N6

Materials	aluminium
Max. revolution, mechanical [U/min]	10000
Max. starting torque [Nm]	2.5
Reference temperature torque [°C]	20
Shaft design	hollow shaft open to one side
Shaft diameter [mm]	6
Shaft fit	H7
Shaft material	steel (1.4104)
Installation depth of shaft [mm]	6...21
Max. axial shaft misalignment [mm]	0,5

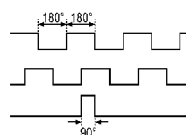
Electrical connection

Cable: 6 m, PUR; radial, can also be used axially

brown	A
green	0 V A
grey	B
pink	0 V B
red	0 index
black	0 V 0 index
brown/green	L+ (Up)
white/green	L- 0V (Un)
lilac	failure inverted
screen	housing

Diagrams and graphs

Pulse diagram



direction of rotation clockwise (looking at the shaft)