

PN8050

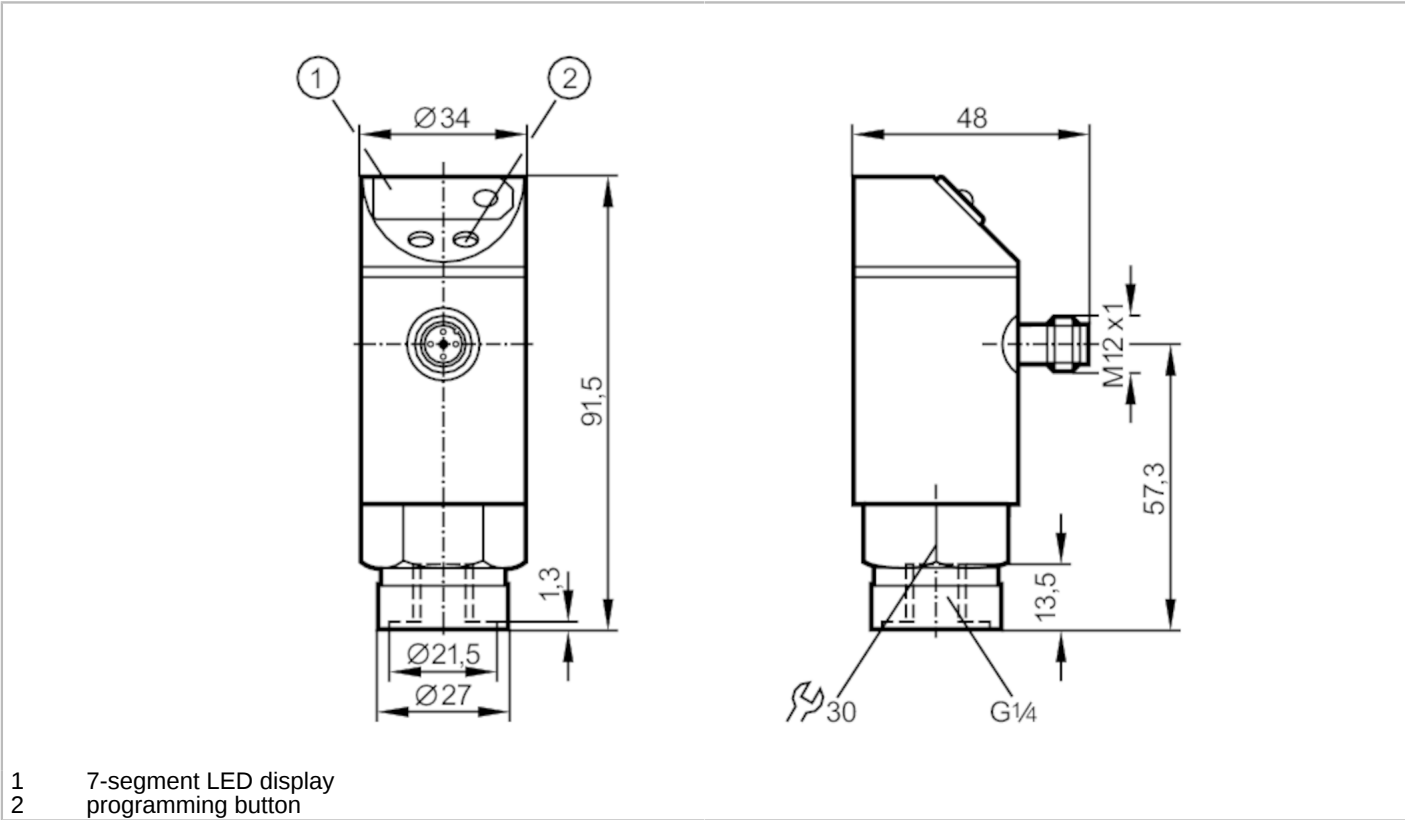


Pressure sensor with display

PN-400-SDR14-KFPKG/US/ IV

Article no longer available - archive entry

Alternative articles: PE3000
When selecting an alternative article and accessories please note that technical data may differ!



Product characteristics	
Number of inputs and outputs	Number of digital outputs: 1; Number of analogue outputs: 1
Measuring range [bar]	0...400
Process connection	threaded connection G 1/4 internal thread
Application	
Application	for industrial applications
Media	liquids and gases
Conditionally suitable for	For gaseous media the application is limited to max. 25 bar.
Medium temperature [°C]	-25...80
Min. bursting pressure [bar]	1000
Pressure rating [bar]	600
Type of pressure	relative pressure
Electrical data	
Operating voltage [V]	20...30 DC
Current consumption [mA]	< 60
Reverse polarity protection	yes
Power-on delay time [s]	0.2



Pressure sensor with display

PN-400-SDR14-KFPKG/US/ /V

Integrated watchdog	yes							
Inputs / outputs								
Number of inputs and outputs	Number of digital outputs: 1; Number of analogue outputs: 1							
Outputs								
Total number of outputs	2							
Output signal	switching signal; analogue signal; (configurable)							
Electrical design	PNP							
Number of digital outputs	1							
Max. voltage drop switching output DC [V]	2							
Permanent current rating of switching output DC [mA]	250							
Number of analogue outputs	1							
Analogue current output [mA]	4...20							
Max. load [Ω]	500							
Short-circuit protection	yes							
Type of short-circuit protection	pulsed							
Overload protection	yes							
Measuring/setting range								
Measuring range [bar]	0...400							
Set point SP [bar]	20...400							
Reset point rP [bar]	12...392							
In steps of [bar]	4							
Accuracy / deviations								
Repeatability [X16]	< ± 0,25; (with temperature fluctuations < 10 K)							
Characteristics deviation [X16]	< ± 2,0							
Temperature drift per 10 K	< ± 0.3							
Response times								
Switching frequency for a given set response time of one output	Response[ms] time (dAP)	15	20	30	50	90	170	330
	Switching [Hz] frequency	50	35	30	20	15	9	5
Response time [ms]	at rectangular pressure characteristic; switch point (SPx) = 70 %; reset point (rPx) = 30 %							
Delay time programmable dS, dr [s]	0, 0,2, 0,4,...3							
Software / programming								
Adjustment of the switch point	programming button							
Operating conditions								
Ambient temperature [°C]	-25...80							
Storage temperature [°C]	-40...100							
Protection	IP 67							

PN8050



Pressure sensor with display

PN-400-SDR14-KFPKG/US/ /V

Tests / approvals		
EMC	IEC 801/2 ESD	4 kV CD / 8 kV AD
	IEC 801/3 HF	10 V/m
	IEC 801/4 Burst	2 kV
Shock resistance	DIN IEC 68-2-27	50 g (11 ms)
Vibration resistance	DIN IEC 68-2-6	20 g (10...2000 Hz)
Mechanical data		
Materials	stainless steel (1.4404 / 316L); PBT; PC; NBR; EPDM/X; FKM	
Materials (wetted parts)	stainless steel (1.4571/316Ti); ceramics; FKM	
Min. pressure cycles	100 million	
Process connection	threaded connection G 1/4 internal thread	
Displays / operating elements		
Display	switching status	LED, red
	function display	7-segment LED display
	measured values	7-segment LED display
Remarks		
Pack quantity	1 pcs.	

Electrical connection

Connector: 1 x M12; coding: A

