



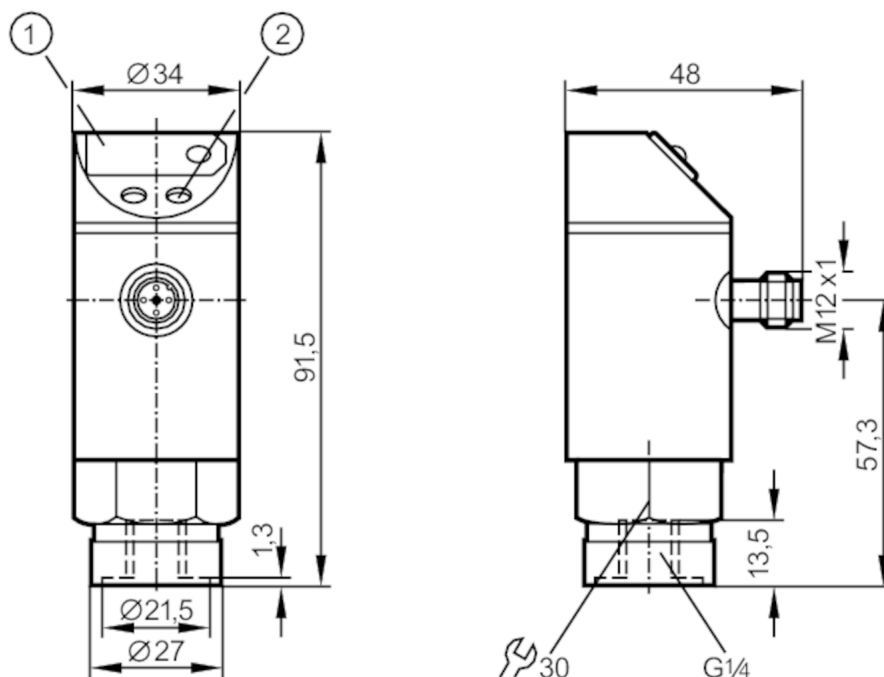
Pressure sensor with display

PN-250-SBR14-KFPKG/US/ IV

Article no longer available - archive entry

Alternative articles: PN3001

When selecting an alternative article and accessories please note that technical data may differ!



- 1 7-segment LED display
- 2 programming button



Product characteristics

Number of inputs and outputs	Number of digital outputs: 1; Number of analogue outputs: 1
Measuring range [bar]	0...250
Process connection	threaded connection G 1/4 internal thread

Application

Application	for industrial applications
Media	liquids and gases
Conditionally suitable for	For gaseous media the application is limited to max. 25 bar.
Medium temperature [°C]	-25...80
Min. bursting pressure [bar]	850
Pressure rating [bar]	400
Type of pressure	relative pressure

Electrical data

Operating voltage [V]	20...30 DC
Current consumption [mA]	< 60

Inputs / outputs

Number of inputs and outputs	Number of digital outputs: 1; Number of analogue outputs: 1
------------------------------	---



Pressure sensor with display

PN-250-SBR14-KFPKG/US/ IV

Outputs									
Total number of outputs		2							
Output signal		switching signal; analogue signal; (configurable)							
Electrical design		PNP							
Number of digital outputs		1							
Max. voltage drop switching output DC	[V]	2							
Permanent current rating of switching output DC	[mA]	250							
Number of analogue outputs		1							
Analogue current output	[mA]	4...20							
Max. load	[Ω]	500							
Measuring/setting range									
Measuring range	[bar]	0...250							
Set point SP	[bar]	12.5...250							
Reset point rP	[bar]	7.5...245							
In steps of	[bar]	2.5							
Accuracy / deviations									
Switch point accuracy	[X16]	< ± 2,0							
Repeatability	[X16]	< ± 0,25; (with temperature fluctuations < 10 K)							
Characteristics deviation	[X16]	< ± 2,0							
Temperature drift per 10 K		< ± 0.3							
Response times									
Switching frequency for a given set response time of one output		Response[ms] time (dAP)	15	20	30	50	90	170	330
		Switching [Hz] frequency	50	35	30	20	15	9	5
Response time	[ms]	at rectangular pressure characteristic; switch point (SPx) = 70 %; reset point (rPx) = 30 %							
Delay time programmable dS, dr	[s]	0, 0,2, 0,4,...3							
Software / programming									
Adjustment of the switch point		programming button							
Operating conditions									
Ambient temperature	[°C]	-25...80							
Storage temperature	[°C]	-40...100							
Protection		IP 67							
Tests / approvals									
EMC		IEC 801/2 ESD				4 kV CD / 8 kV AD			
		IEC 801/3 HF				10 V/m			
		IEC 801/4 Burst				2 kV			
Mechanical data									
Materials		brass nickel-plated; PBT; PC; PA							
Materials (wetted parts)		brass nickel-plated; ceramics; FKM; NBR; EPDM/X							
Min. pressure cycles		100 million							

PN8021



Pressure sensor with display

PN-250-SBR14-KFPKG/US/ /V

Process connection	threaded connection G 1/4 internal thread
--------------------	---

Displays / operating elements

Display	switching status	LED, red
	function display	7-segment LED display
	measured values	7-segment LED display

Remarks

Pack quantity	1 pcs.
---------------	--------

Electrical connection

Connector: 1 x M12; coding: A

