

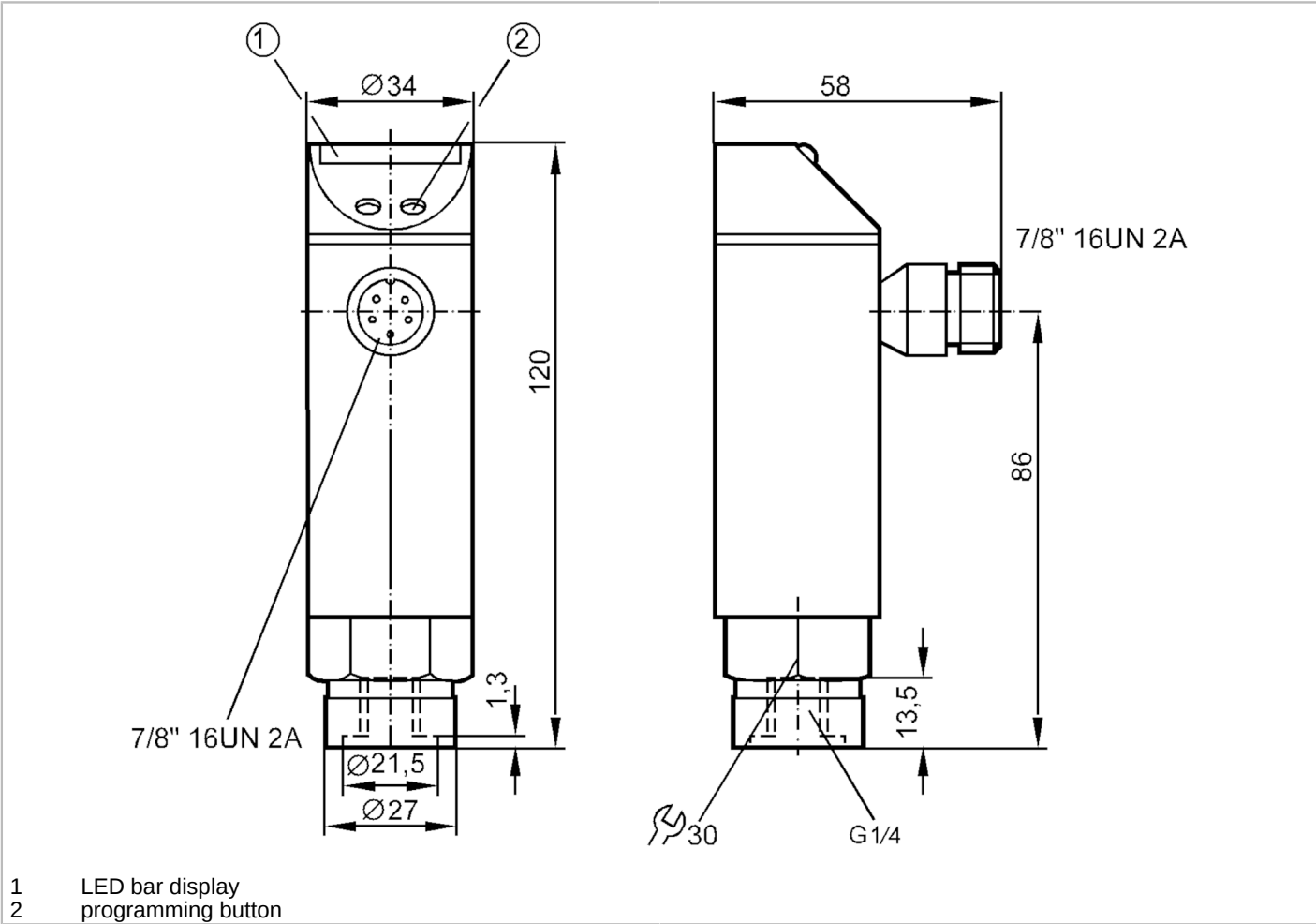


Pressure sensor with LED bar display

PB-100-SBR14-HFBOW/LS/ IV

Article no longer available - archive entry

Alternative articles: PN4222 + E30058
When selecting an alternative article and accessories please note that technical data may differ!



Product characteristics	
Number of inputs and outputs	Number of digital outputs: 1
Measuring range [bar]	0...100
Process connection	threaded connection G 1/4 internal thread
Application	
Application	for industrial applications
Media	liquids and gases
Conditionally suitable for	For gaseous media the application is limited to max. 25 bar.
Medium temperature [°C]	-25...70
Min. bursting pressure [bar]	650
Pressure rating [bar]	300
Type of pressure	relative pressure



Pressure sensor with LED bar display

PB-100-SBR14-HFBOW/LS/ /V

Electrical data		
Operating voltage	[V]	102...132 AC
Current consumption	[mA]	20
Power-on delay time	[s]	0.35
Integrated watchdog		yes
Inputs / outputs		
Number of inputs and outputs		Number of digital outputs: 1
Outputs		
Total number of outputs		1
Output signal		switching signal
Number of digital outputs		1
Output function		normally open
Max. voltage drop switching output AC	[V]	2
Permanent current rating of switching output AC	[mA]	250; ((...70 °C) 1000 (...60 °C) 1500 (...45 °C) 2500 (...20 °C))
Short-circuit protection		no
Overload protection		no
Measuring/setting range		
Measuring range	[bar]	0...100
Set point SP	[bar]	5...100
Reset point rP	[bar]	3...98
In steps of	[bar]	1
Note on hysteresis		adjustable
Accuracy / deviations		
Switch point accuracy	[X16]	$< \pm 2,0$
Repeatability	[X16]	$< \pm 0,25$; (with temperature fluctuations < 10 K)
Temperature drift per 10 K		$< \pm 0.3$
Software / programming		
Adjustment of the switch point		programming button
Operating conditions		
Ambient temperature	[°C]	-25...70
Storage temperature	[°C]	-40...100
Protection		IP 67
Tests / approvals		
EMC	IEC 801/2 ESD	4 kV CD / 8 kV AD
	IEC 801/3 HF	10 V/m
	IEC 801/4 Burst	2 kV
	DIN IEC 68-2-27	50 g (11 ms)
Shock resistance	DIN IEC 68-2-6	20 g (10...2000 Hz)
Vibration resistance		
Mechanical data		
Materials		EPDM/X; FKM; NBR; PBT; PC; stainless steel (1.4301 / 304)
Materials (wetted parts)		FKM; ceramics; stainless steel (1.4305 / 303)

PB4012



Pressure sensor with LED bar display

PB-100-SBR14-HFBOW/LS/ /V

Min. pressure cycles	100 million
Process connection	threaded connection G 1/4 internal thread
Restrictor element integrated	no (can be retrofitted)

Displays / operating elements

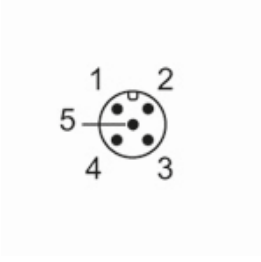
Display	switching status	LED, yellow
	measured values	10 x LED, green Resolution 10% of the final value

Remarks

Pack quantity	1 pcs.
---------------	--------

Electrical connection

Connector: 1 x 7/8"; coding: A



Connection

