



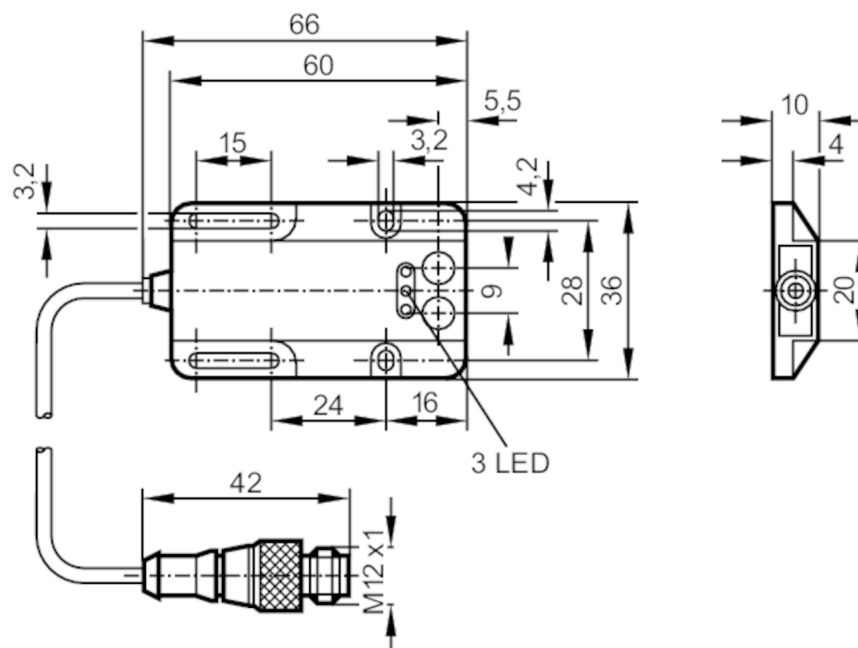
## Through-beam sensor transmitter

OWS-OKG/0,1M/US

Article no longer available - archive entry

Alternative articles: OJ5065

When selecting an alternative article and accessories please note that technical data may differ!



transmitter in lower lens

## Product characteristics

Type of light	red light
Housing	rectangular

## Application

Function principle	Through-beam sensor
--------------------	---------------------

## Electrical data

Operating voltage	[V]	10...36 DC
Current consumption	[mA]	15; ((36 V))
Reverse polarity protection		yes
Type of light		red light
Wave length	[nm]	660

## Outputs

Overload protection	yes
---------------------	-----

## Detection zone

Transmitter / receiver		transmitter
Range	[m]	< 4
Max. light spot diameter	[mm]	320
Light spot dimensions refer to		at maximum range

## Operating conditions

Ambient temperature	[°C]	-25...60
Protection		IP 67

# OW1013



## Through-beam sensor transmitter

OWS-00KG/0,1M/US

Tests / approvals		
EMC	EN 60947-5-2	
	EN 55011	class B
Mechanical data		
Weight	[g]	0.026
Housing		rectangular
Dimensions	[mm]	36 x 60 x 10
Materials		ABS glass fibre reinforced
Lens material		PMMA
Displays / operating elements		
Display	operation	1 x LED, green
Remarks		
Pack quantity		1 pcs.

Electrical connection	
Cable: 0.1 m, PVC	

Connector: 1 x M12; coding: A

