

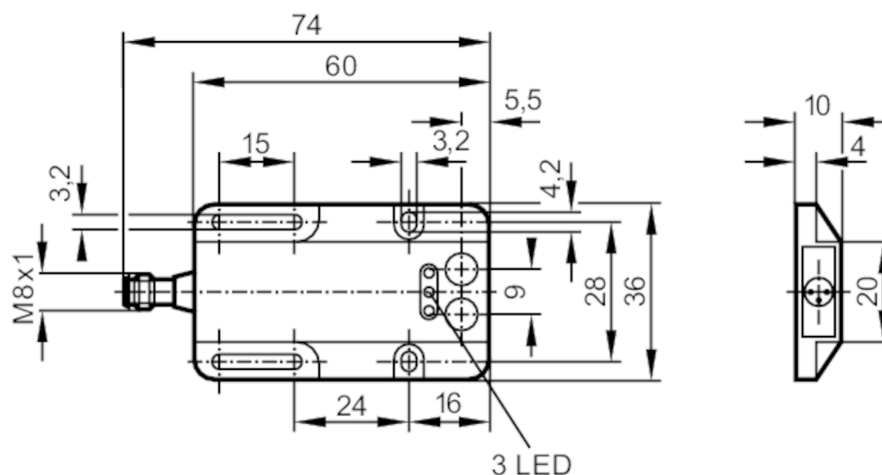
## Through-beam sensor transmitter

OWS-00KG/AS

Article no longer available - archive entry

Alternative articles: OJ5008

When selecting an alternative article and accessories please note that technical data may differ!



transmitter in lower lens

## Product characteristics

Type of light	red light
Housing	rectangular

## Application

Function principle	Through-beam sensor
--------------------	---------------------

## Electrical data

Operating voltage	[V]	10...36 DC
Current consumption	[mA]	15; ((36 V))
Protection class		III
Reverse polarity protection		yes
Type of light		red light
Wave length	[nm]	660

## Outputs

Overload protection	yes
---------------------	-----

## Detection zone

Transmitter / receiver	transmitter
Range [m]	< 4
Max. light spot diameter [mm]	320
Light spot dimensions refer to	at maximum range

## Operating conditions

Ambient temperature	[°C]	-25...60
Protection		IP 65

## Tests / approvals

EMC	EN 60947-5-2	
	EN 55011	class B

# OW1010



## Through-beam sensor transmitter

OWS-OOKG/AS

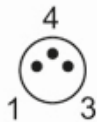
Mechanical data		
Housing		rectangular
Dimensions	[mm]	36 x 60 x 10
Materials		ABS glass fibre reinforced
Lens material		PMMA

Displays / operating elements		
Display	operation	1 x LED, green

Remarks		
Pack quantity		1 pcs.

### Electrical connection

Connector: 1 x M8; coding: A



### Connection

