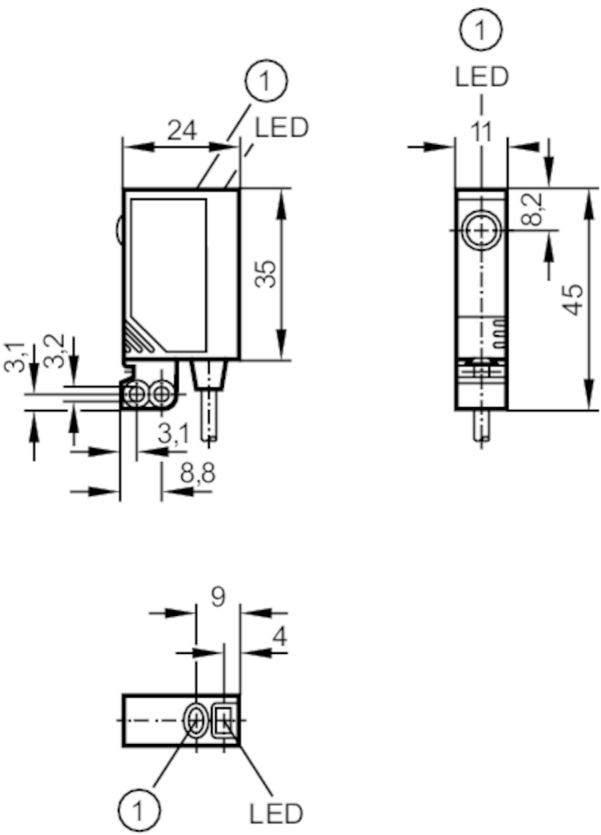




Through-beam sensor receiver

OJE-FPKG/SO



1 pushbutton



Product characteristics		
Type of light		red light
Housing		rectangular
Application		
Function principle		Through-beam sensor
Electrical data		
Operating voltage	[V]	10...30 DC
Current consumption	[mA]	< 12
Protection class		III
Reverse polarity protection		yes
Type of light		red light
Wave length	[nm]	660
Outputs		
Electrical design		PNP
Output function		light-on/dark-on mode; (programmable)
Max. voltage drop switching output DC	[V]	2.5
Permanent current rating of switching output DC	[mA]	200



Through-beam sensor receiver

OJE-FPKG/SO

Switching frequency DC	[Hz]	1200
Short-circuit protection		yes
Type of short-circuit protection		pulsed
Overload protection		yes
Detection zone		
Transmitter / receiver		receiver
Range	[m]	< 10
Range adjustable		yes
Operating conditions		
Ambient temperature	[°C]	-25...60
Protection		IP 67
Tests / approvals		
EMC		EN 60947-5-2
MTTF	[ANN]	952
Mechanical data		
Weight	[g]	72.5
Housing		rectangular
Dimensions	[mm]	35 x 11 x 24
Materials		housing: ABS; fixture: diecast zinc; LED window: SEPS; pushbutton: SEPS
Lens material		glass
Lens alignment		side lens
Displays / operating elements		
Display	switching status	1 x LED, yellow
	operation	1 x LED, green
	function	1 x LED, red
Electronic lock		yes
Аксессуары		
Items supplied		Basic clip: 1, E20964
		screws: 2 x M3 x 16
		spring washers: 2
		Nuts: 2
Remarks		
Remarks		operating voltage "supply class 2" according to cULus
Pack quantity		1 pcs.

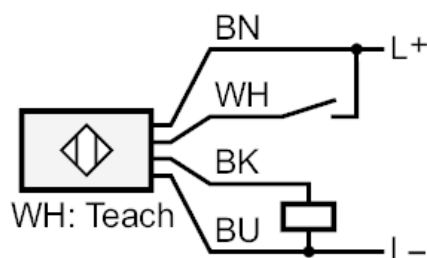
Through-beam sensor receiver

OJE-FPKG/SO

Electrical connection

Cable: 2 m, PVC; 4 x 0.14 mm²

Connection



	Core colours :
BK =	black
BN =	brown
BU =	blue
WH =	white

Diagrams and graphs

excess gain graph

