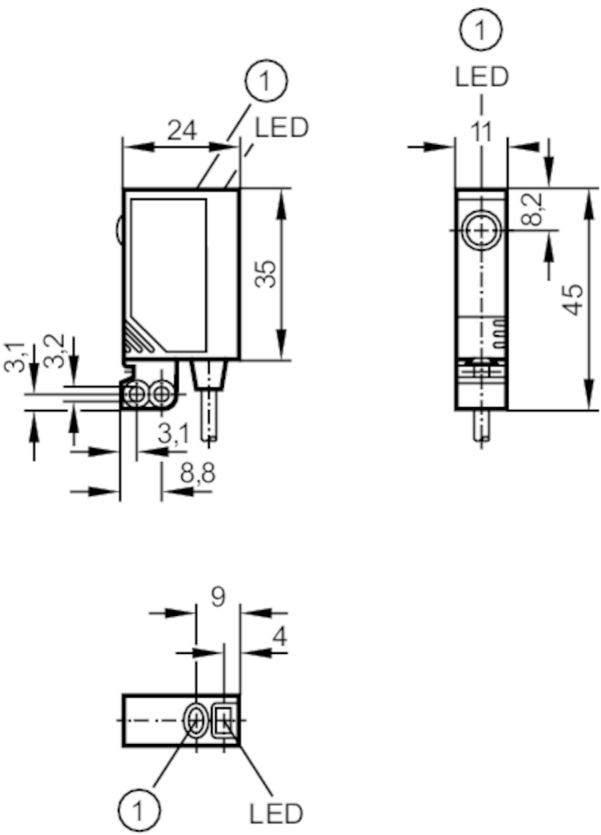




Through-beam sensor transmitter

OJS-00KG/SO



1 pushbutton without function



Product characteristics		
Type of light		red light
Housing		rectangular
Application		
Function principle		Through-beam sensor
Electrical data		
Operating voltage	[V]	10...30 DC
Current consumption	[mA]	< 19
Protection class		III
Reverse polarity protection		yes
Type of light		red light
Wave length	[nm]	660
Outputs		
Overload protection		yes
Detection zone		
Transmitter / receiver		transmitter
Range	[m]	< 10
Max. light spot diameter	[mm]	1000



Through-beam sensor transmitter

OJS-00KG/SO

Light spot dimensions refer to _____ at maximum range

Operating conditions

Ambient temperature	[°C]	-25...60
Protection		IP 67

Tests / approvals

EMC		EN 60947-5-2
MTTF	[ANN]	1764

Mechanical data

Weight	[g]	71.5
Housing		rectangular
Dimensions	[mm]	35 x 11 x 24
Materials		housing: ABS; fixture: diecast zinc; LED window: SEPS; pushbutton: SEPS
Lens material		glass
Lens alignment		side lens

Displays / operating elements

Display	operation	1 x LED, green
---------	-----------	----------------

Аксессуары

Items supplied	Basic clip: 1, E20964
	screws: 2 x M3 x 16
	spring washers: 2
	Nuts: 2

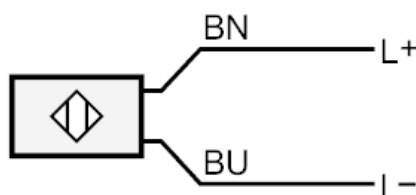
Remarks

Remarks	operating voltage "supply class 2" according to cULus
Pack quantity	1 pcs.

Electrical connection

Cable: 2 m, PVC; 2 x 0.14 mm²

Connection



BN = Core colours :
brown
BU = blue