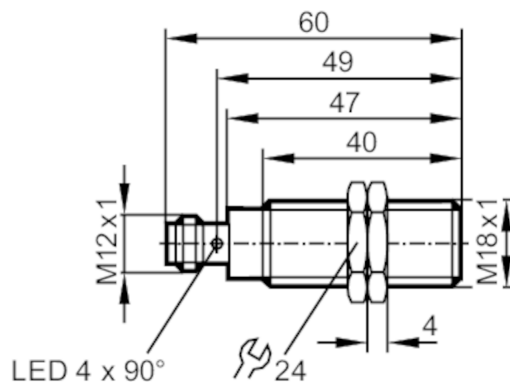


OGS-00KG/US100



threaded type

Through-beam sensor

M18 x 1

OGS300



Through-beam sensor transmitter

OGS-00KG/US100

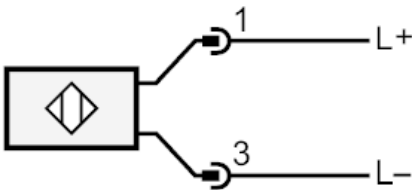
Materials	housing: stainless steel (1.4404 / 316L); Sealing: EPDM	
Lens material	PMMA	
Displays / operating elements		
Display	operation	1 x LED, green
Аксессуары		
Items supplied	lock nuts: 2	
Remarks		
Remarks	operating voltage "supply class 2" according to cULus	
Pack quantity	1 pcs.	

Electrical connection

Connector: 1 x M12; coding: A



Connection





Through-beam sensor transmitter

OGS-00KG/US100

Diagrams and graphs

excess gain graph

