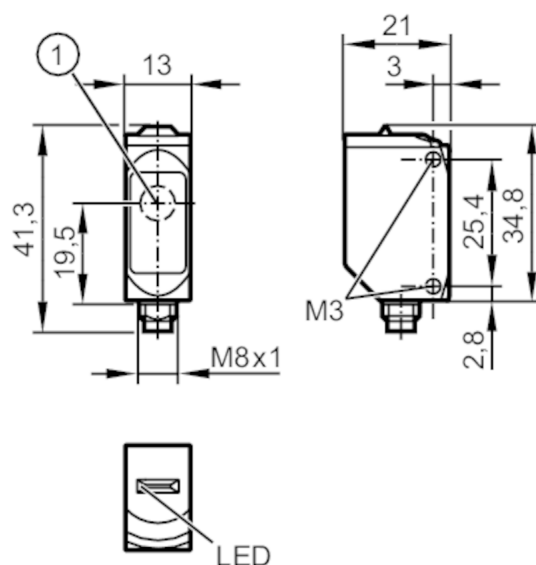


## Through-beam sensor transmitter

O6S-OOKG/AS/4P



1: light emission



## Product characteristics

Type of light	red light
Housing	rectangular

## Application

Function principle	Through-beam sensor
--------------------	---------------------

## Electrical data

Operating voltage	[V]	10...30 DC
Current consumption	[mA]	11; ((24 V))
Protection class		III
Type of light		red light
Wave length	[nm]	633

## Detection zone

Transmitter / receiver		transmitter
Range	[m]	< 10
Max. light spot diameter	[mm]	300
Light spot dimensions refer to		at maximum range

## Interfaces

Communication interface		IO-Link
Transmission type		COM2 (38,4 kBaud)
IO-Link revision		1.1
SDCI standard		IEC 61131-9
Profiles		Smart Sensor: Device Identification
SIO mode		yes
Required master port type		A
Min. process cycle time	[ms]	2.5



## Through-beam sensor transmitter

O6S-00KG/AS/4P

IO-Link process data (cyclical)	<b>function</b>	<b>bit length</b>
	process value	8
IO-Link functions (acyclical)	application specific tag; operating hours counter; switching cycles counter	
Supported DeviceIDs	<b>Type of operation</b>	<b>DeviceID</b>
	default	420

## Operating conditions

Ambient temperature	[°C]	-25...80
Protection	IP 65; IP 67; IP 68; IP 69K	

## Tests / approvals

EMC	EN 60947-5-2	
MTTF	[ANN]	1239
UL approval	UL Approval no.	E011

## Mechanical data

Weight	[g]	33.8
Housing	rectangular	
Dimensions	[mm]	34.8 x 13 x 21
Materials	housing: stainless steel (1.4404 / 316L); plastics: PPSU; Sealing: EPDM	
Lens material	PMMA	
Lens alignment	side lens	
Tightening torque	[Nm]	1; (screws)

## Displays / operating elements

Display	operation	1 x LED, green
---------	-----------	----------------

## Remarks

Remarks	operating voltage "supply class 2" according to cULus	
Pack quantity	1 pcs.	

## Electrical connection

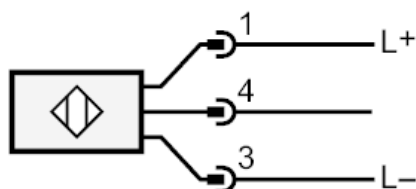
Connector: 1 x M8; coding: A



## Through-beam sensor transmitter

O6S-00KG/AS/4P

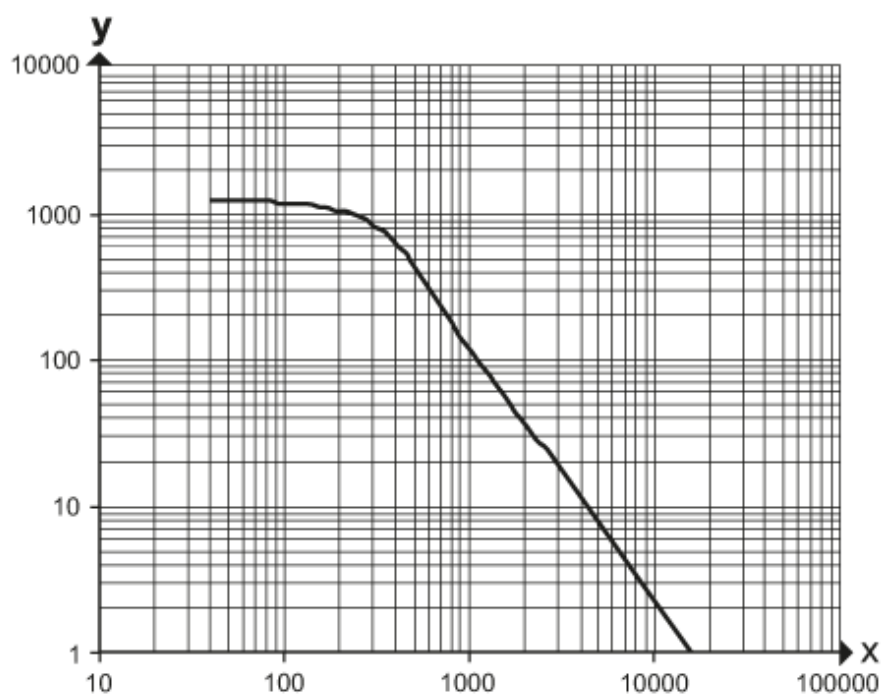
### Connection



4 IO-Link

### Diagrams and graphs

excess gain graph



x: distance [mm]

y: excess gain factor