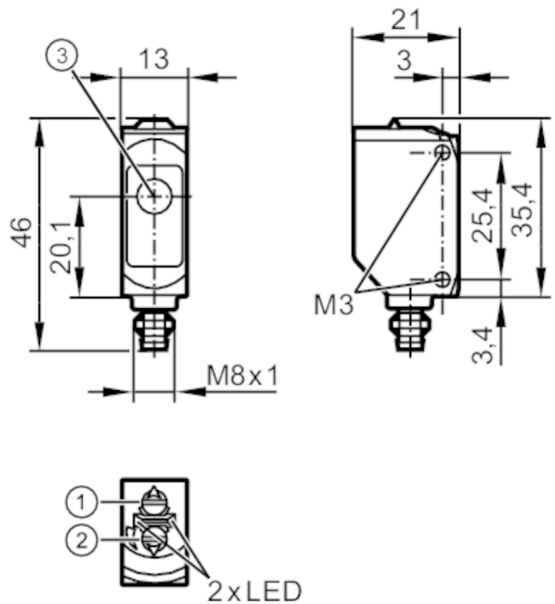




Through-beam sensor receiver

O6E-FPKG/AS/4P



- 1: output function switch
2: potentiometer sensitivity
3: Light incidence




Product characteristics		
Type of light		red light
Housing		rectangular
Application		
Function principle		Through-beam sensor
Electrical data		
Operating voltage	[V]	10...30 DC
Current consumption	[mA]	7; ((24 V))
Protection class		III
Reverse polarity protection		yes
Type of light		red light
Wave length	[nm]	633
Outputs		
Electrical design		PNP
Output function		light-on/dark-on mode; (selectable)
Max. voltage drop switching output DC	[V]	2.5
Permanent current rating of switching output DC	[mA]	100
Switching frequency DC	[Hz]	1000
Short-circuit protection		yes
Type of short-circuit protection		pulsed



Through-beam sensor receiver

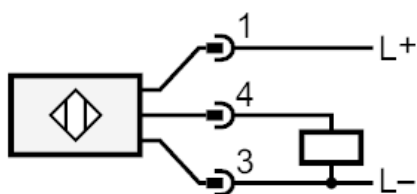
O6E-FPKG/AS/4P

Detection zone		
Transmitter / receiver	receiver	
Range	[m]	< 10
Range adjustable	yes	
Operating conditions		
Ambient temperature	[°C]	-25...60
Protection	IP 65; IP 67	
Tests / approvals		
EMC	EN 60947-5-2	
MTTF	[ANN]	956
UL approval	UL Approval no.	E001
Mechanical data		
Weight	[g]	18.2
Housing	rectangular	
Dimensions	[mm]	46 x 13 x 21
Materials	housing: ABS; PPSU	
Lens material	PMMA	
Lens alignment	side lens	
Sealing material	EPDM	
Tightening torque	[Nm]	0.5
Displays / operating elements		
Display	switching status	1 x LED, yellow
	operation	1 x LED, green
Remarks		
Remarks	operating voltage "supply class 2" according to cULus	
Pack quantity	1 pcs.	
Electrical connection		
Connector: 1 x M8; coding: A; Locking: brass, coated; Sealing: EPDM		
<div></div>		

Through-beam sensor receiver

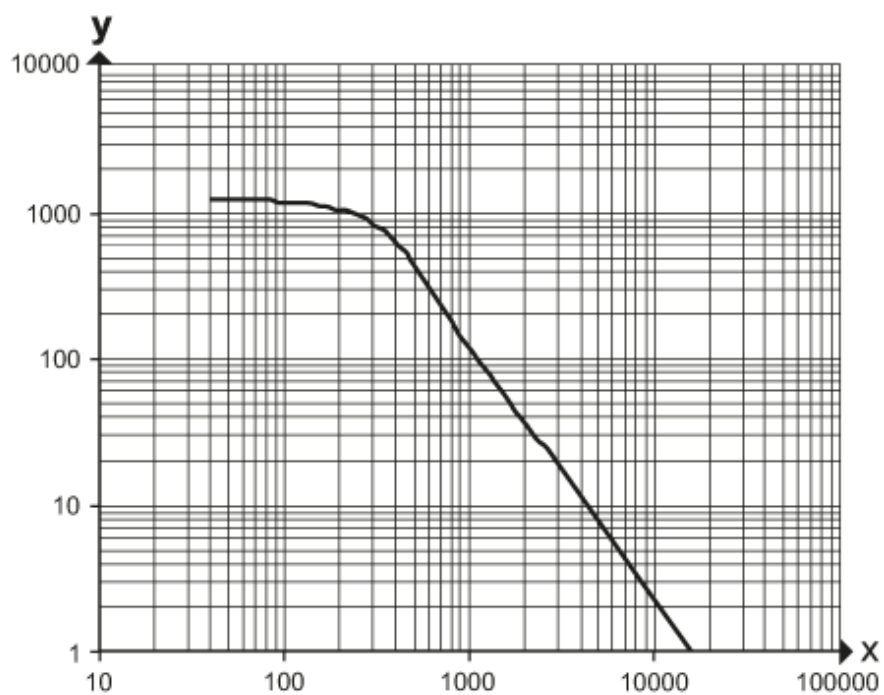
O6E-FPKG/AS/4P

Connection



Diagrams and graphs

excess gain graph



x: distance [mm]

y: excess gain factor