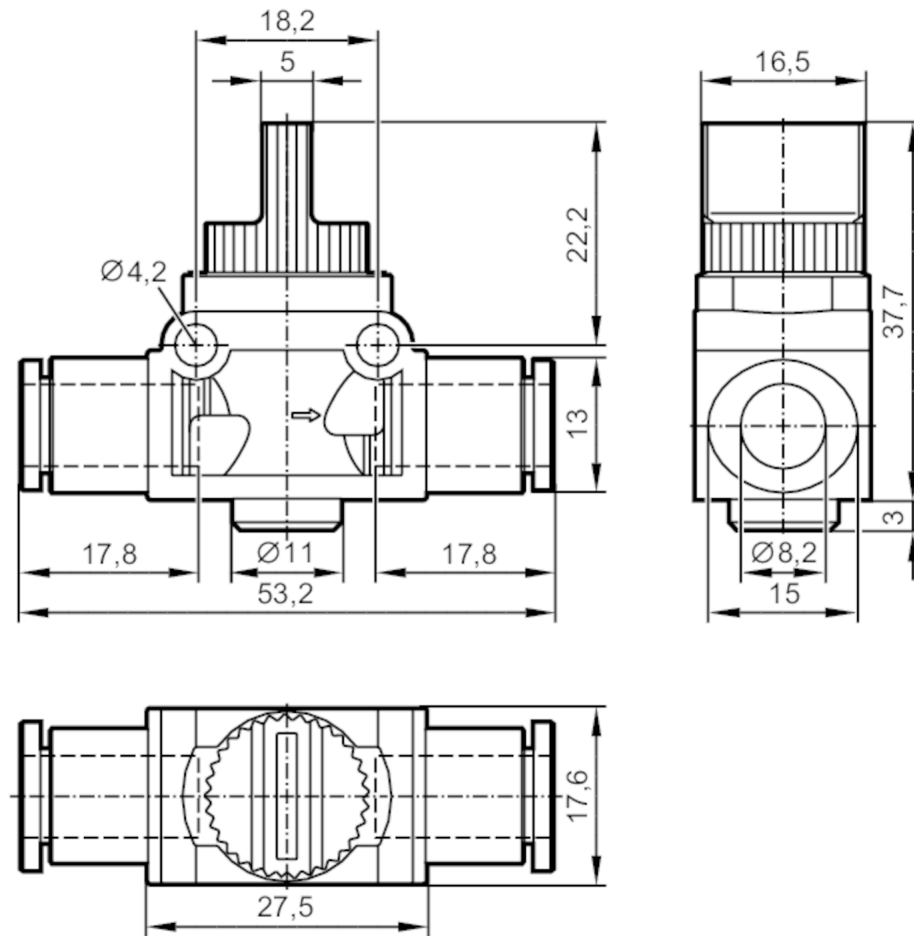


E75233



3/2-way shut-off valve

Shut-off valve



Application	
Media	compressed air according to ISO 8573-1: 2001
Operating conditions	
Ambient temperature	[°C] 0...60
Mechanical data	
Weight	[g] 23.3
Materials	housing: PBT; release ring: polyoxymethylene; Tooth lock washer: stainless steel; Sealing: NBR
Remarks	
Remarks	3/2-way shut-off valves block the airflow and vent the secondary side. Installation before the P connection [1] of the AirBox to block the compressed air supply of the AirBox.
Pack quantity	1 pcs.