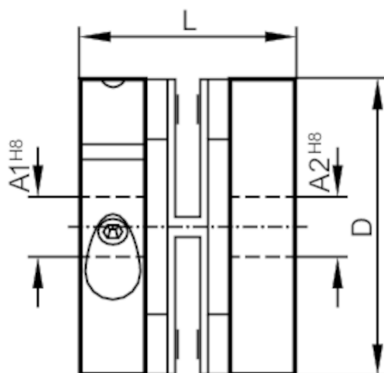


Spring disc coupling

SPRING COUPLING 30-6-8-22

phase-out article



Mechanical data

Weight	[g]	31
Dimensions	[mm]	Ø 30 / L = 22
Materials		diecast zinc; PA
External diameter D	[mm]	30
Inside diameter 1	[mm]	6
Inside diameter 2	[mm]	8
Length L	[mm]	22
Max. revolution, mechanical [U/min]		12000
Max. axial shaft misalignment [mm]		± 0,4
Max. radial shaft misalignment [mm]		± 0,3
Max. angular displacement [°]		± 2,5

Remarks

Remarks	<p>The data indicated apply to couplings with the above hub borings at an ambient temperature of 23 °C.</p> <p>The values of radial, angular and axial displacement are maximum values which must not reach their maximum simultaneously while in operation.</p>
Pack quantity	1 pcs.