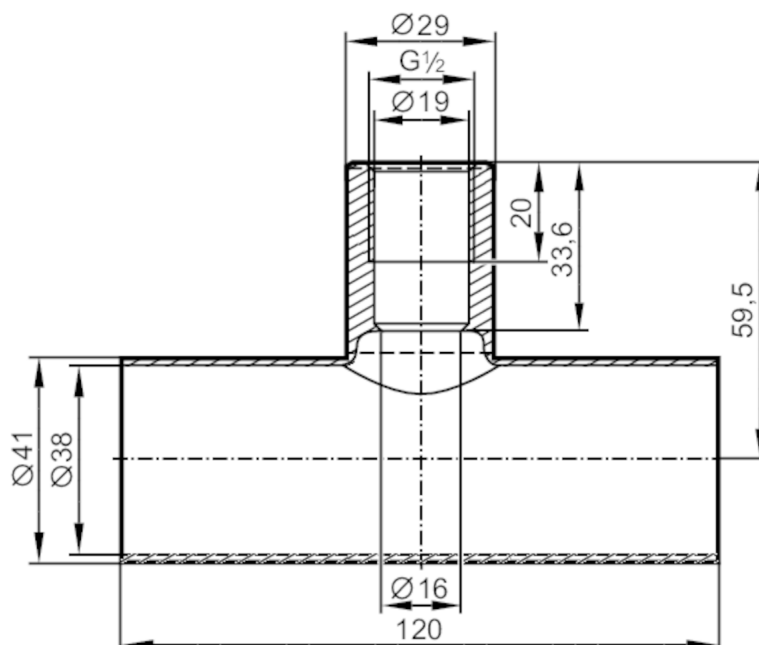




## T-piece

T-PIPE/G1/2/L120/DN40

EC 1935/2004 EHEDG Tested **FCM**

Application		
Design		for sensors and adapters with process connection G 1/2 A
Pressure rating	[bar]	25
Tests / approvals		
Pressure Equipment Directive		A possible classification to PED depends on the application and has to be carried out by the user / operator.
Safety instructions		The compatibility between medium and product material has to be checked in all applications.
Mechanical data		
Weight	[g]	407.5
Materials		stainless steel (1.4404 / 316L)
Sensor connection		G 1/2 sealing cone
Process connection		welding adapter Ø 41 mm
Surface characteristics Ra/Rz of the wetted parts		0.8 / 4
Аксессуары		
Items supplied		O-ring: 1, FKM
Remarks		
Pack quantity		1 pcs.