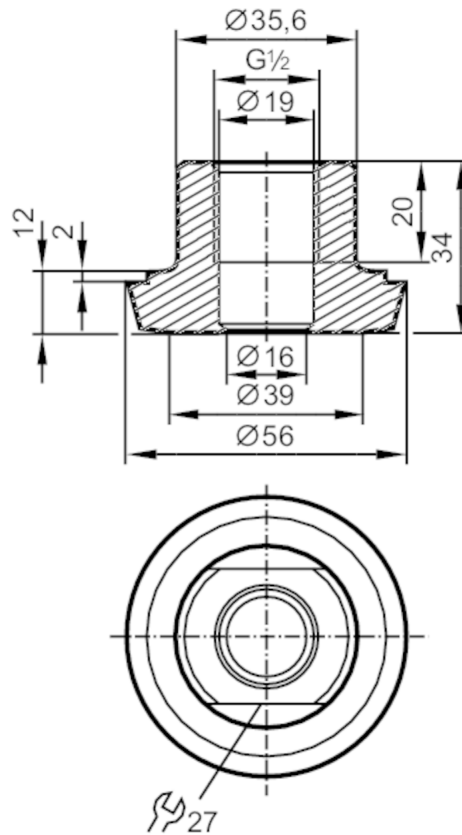


Process adapter hygienic pipe fitting

ADAPT G1/2-DIN11851 DN40

EC 1935/2004 FCM 

Application		
Pressure rating	[bar]	40
Tests / approvals		
Pressure Equipment Directive	A possible classification to PED depends on the application and has to be carried out by the user / operator.	
Safety instructions	The compatibility between medium and product material has to be checked in all applications.	
Mechanical data		
Weight	[g]	341.5
Materials	stainless steel (1.4435 / 316L)	
Sensor connection	G 1/2 sealing cone	
Process connection	hygienic pipe fitting DN40 (1,5") DIN 11851	
Surface characteristics Ra/Rz of the wetted parts	0.4 / 4	
Hygienic equipment class to DIN 11866	H4	
Remarks		
Pack quantity	1 pcs.	