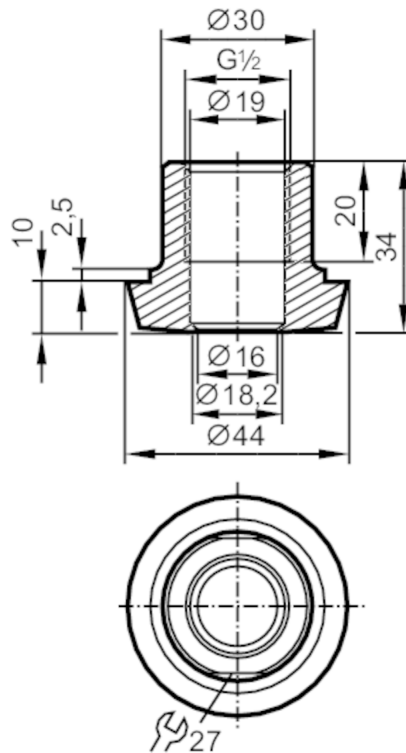


## Process adapter hygienic pipe fitting

ADAPT G1/2-DIN11851 DN25

EC 1935/2004 FCM 

## Application

Pressure rating	[bar]	40
-----------------	-------	----

## Tests / approvals

Pressure Equipment Directive	A possible classification to PED depends on the application and has to be carried out by the user / operator.
Safety instructions	The compatibility between medium and product material has to be checked in all applications.

## Mechanical data

Weight	[g]	219.5
Materials		stainless steel (1.4435 / 316L)
Sensor connection		G 1/2 sealing cone
Process connection		hygienic pipe fitting DN25 (1") DIN 11851
Surface characteristics Ra/Rz of the wetted parts		0.4 / 4
Hygienic equipment class to DIN 11866		H4

## Remarks

Pack quantity	1 pcs.
---------------	--------