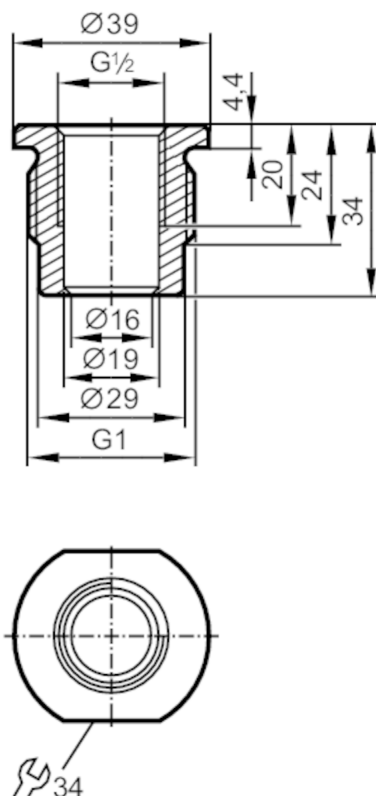




## Screw-in adapter for process sensors

ADAPT G1/2-G1



CRN EC 1935/2004 FCM FDA

## Tests / approvals

Pressure Equipment Directive

A possible classification to PED depends on the application and has to be carried out by the user / operator.

Safety instructions

The compatibility between medium and product material has to be checked in all applications.

## Mechanical data

Weight [g]

189

Materials

stainless steel (1.4435 / 316L)

Sensor connection

G 1/2 sealing cone

Process connection

threaded connection G 1

Surface characteristics Ra/Rz of the wetted parts

0.4 / 4

## Remarks

Pack quantity

1 pcs.