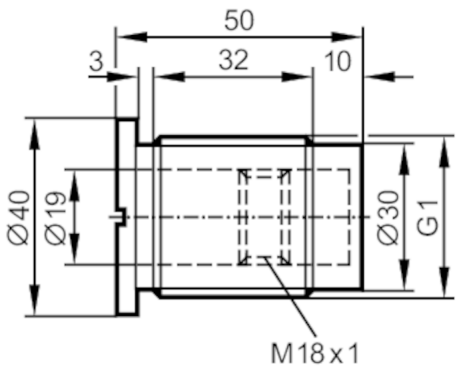


# E43905



## Mounting adapter for capacitive sensors

MOUNTING CAP G1",PVDF



Application		
Pressure rating	[bar]	8
Operating conditions		
Ambient temperature	[°C]	-25...110
Mechanical data		
Weight	[g]	50.2
Dimensions	[mm]	G 1 / L = 50
Thread designation		G 1
Materials		Adapter: PVDF
Tightening torque	[Nm]	5
Sensor connection		threaded connection M18 x 1 internal thread
Process connection		threaded connection G 1 external thread
Remarks		
Pack quantity		1 pcs.