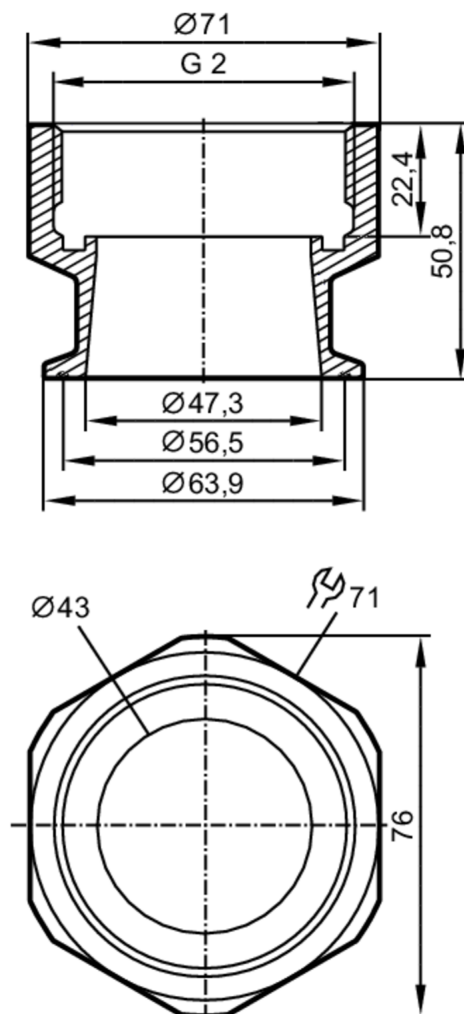


Mounting adapter for flow sensors

ADAPT G2-CLAMP/D64,0/DIN32676



Application

Design	for flow sensors Typ SM2, SM9
Application	for industrial applications
Media	liquids and gases
Pressure rating [bar]	16

Tests / approvals

Pressure Equipment Directive	A possible classification to PED depends on the application and has to be carried out by the user / operator.
Safety instructions	The compatibility between medium and product material has to be checked in all applications.

Mechanical data

Weight [g]	1040
Materials	Adapter: stainless steel (1.4404 / 316L); O-ring: FKM 47,22 x 3,53 mm
Sensor connection	G 2
Process connection	Clamp DN50 (2") DIN 32676 (ISO 2852)

Аксессуары

Items supplied	O-rings: 2
----------------	------------

E40254



Mounting adapter for flow sensors

ADAPT G2-CLAMP/D64,0/DIN32676

Remarks	
Pack quantity	2 pcs.