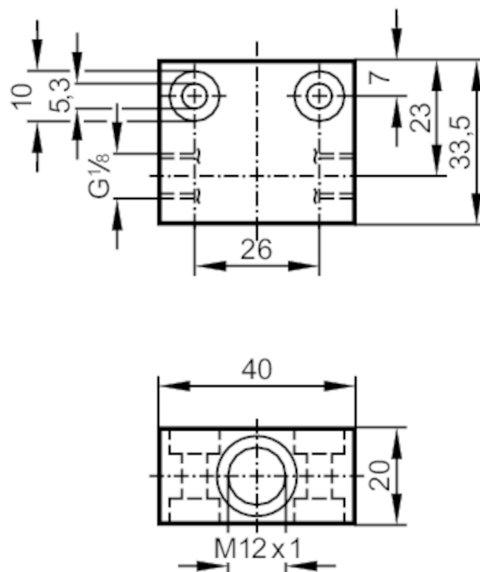


Process adapter for small volumetric flow quantities

FLOW ADAPT SI



Application

Design	for flow sensors and flow monitors
Application	for industrial applications
Installation	via internal G1/8A male thread, any mounting position
Media	liquids and gases
Medium temperature [°C]	0...80; (Temperature gradient: 1 K/min)
Pressure rating [bar]	300

Measuring/setting range

Flow range [ml/min]	2...100
---------------------	---------

Tests / approvals

Pressure Equipment Directive	A possible classification to PED depends on the application and has to be carried out by the user / operator.
Safety instructions	The compatibility between medium and product material has to be checked in all applications.

Mechanical data

Weight [g]	156.5
Dimensions [mm]	M12 x 1
Thread designation	M12 x 1
Materials	stainless steel (1.4404 / 316L)
Sensor connection	M12 x 1
Process connection	G 1/8

Аксессуары

Items supplied	sealings: 1, U-seal
Accessories (optional)	Adapter: ≤ 30 bar, E40101
	Adapter: ≤ 300 bar, E40236

Remarks

Remarks	Може використовуватися лише в поєднанні з відповідним режимом роботи датчика потоку.
Pack quantity	1 pcs.