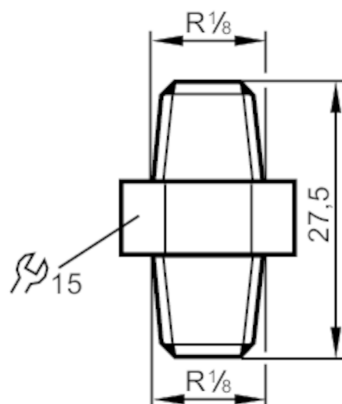


E37350



Screw-in adapter for process sensors

ROTATABLE DOUBLE NIPPLE



Application

Installation	rotatable
Pressure rating [bar]	16

Tests / approvals

Pressure Equipment Directive	A possible classification to PED depends on the application and has to be carried out by the user / operator.
Safety instructions	The compatibility between medium and product material has to be checked in all applications.

Mechanical data

Weight [g]	20.3
Type of mounting	rotatable
Materials	brass nickel-plated
Sensor connection	R 1/8
Process connection	threaded connection R 1/8

Remarks

Pack quantity	1 pcs.
---------------	--------