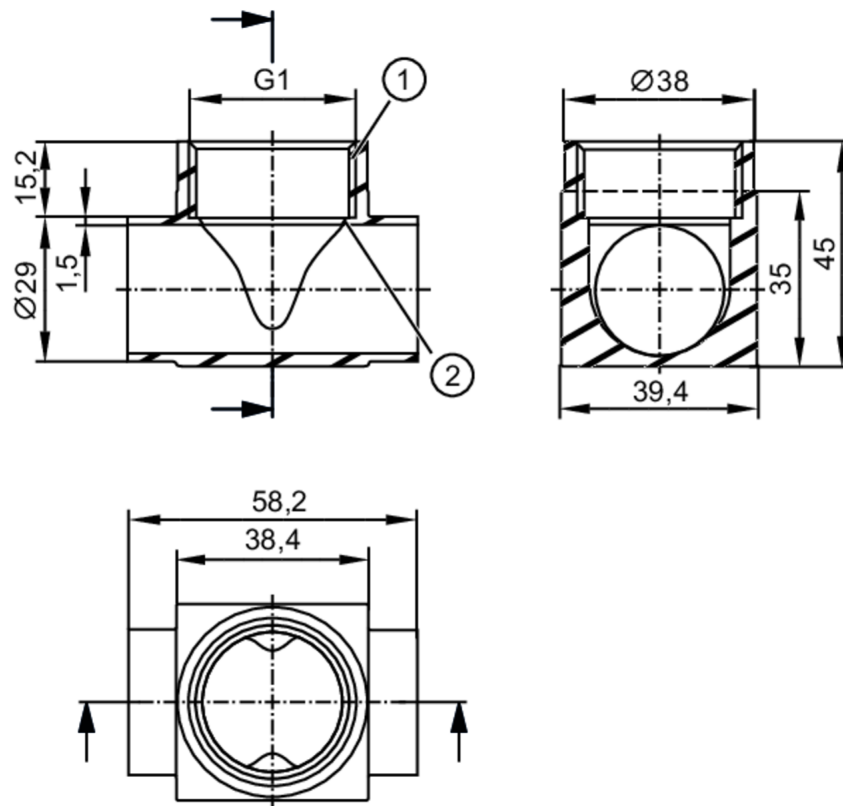




T-piece

T-ADAPT G1 DN25



- 1 Aseptoflex Vario
2 sealing area

EC 1935/2004 

Application

| | | |
|-------------------------|-------------------------------------|----|
| Pressure rating | [bar] | 25 |
| Note on pressure rating | for the connection sensor - adapter | |

Tests / approvals

| | | |
|------------------------------|---|--|
| Pressure Equipment Directive | A possible classification to PED depends on the application and has to be carried out by the user / operator. | |
| Safety instructions | The compatibility between medium and product material has to be checked in all applications. | |

Mechanical data

| | | |
|--------------------------|---|-------|
| Weight | [g] | 305.5 |
| Materials (wetted parts) | stainless steel (1.4404 / 316L) ; surface characteristics : Ra<0,8 / Rz 4 | |
| Sensor connection | G 1 Aseptoflex Vario | |
| Process connection | welding adapter Ø 29 mm | |
| Sealing | Gasket | |

Аксессуары

| | | |
|------------------------|---|--|
| Items supplied | O-ring: 1 x 24 x 2, EPDM, FDA compliant, E30054 | |
| Accessories (optional) | O-ring: 1 x 24 x 2, FKM, FDA compliant, E30123 | |

Remarks

| | | |
|---------------|--------|--|
| Pack quantity | 1 pcs. | |
|---------------|--------|--|