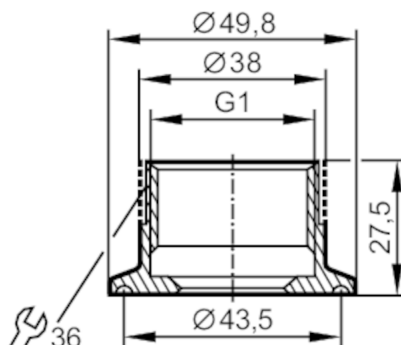




Process adapter Tri-Clamp

ADAPT G1-CLAMP ISO2852/1-1.5



CRN EC 1935/2004 EHEDG Tested FCM FDA

Application		
Pressure rating	[bar]	16
MAWP (for applications according to CRN)	[bar]	16
Tests / approvals		
Pressure Equipment Directive	A possible classification to PED depends on the application and has to be carried out by the user / operator.	
Safety instructions	The compatibility between medium and product material has to be checked in all applications.	
Mechanical data		
Weight	[g]	140
Materials (wetted parts)	stainless steel (1.4404 / 316L) ; surface characteristics : Ra<0,4 / Rz 4	
Sensor connection	G 1 sealing cone	
Process connection	Clamp DN25...DN40 (1...1,5") DIN 32676 (ISO 2852)	
Hygienic equipment class to DIN 11866	H4	
Remarks		
Pack quantity	1 pcs.	