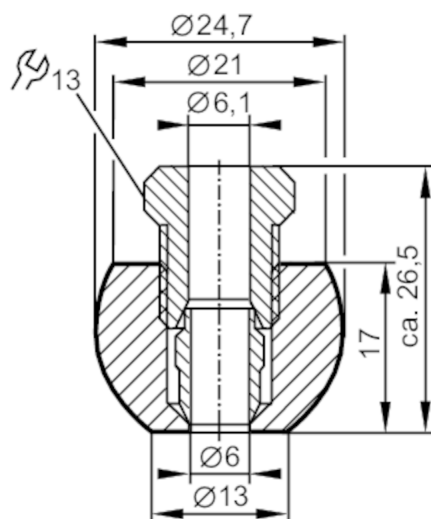


## Welding adapter for process sensors

WELDING ADAPTER D6



## Application

Design	for temperature sensors Ø 6 mm
Installation	Clamp fitting
Pressure rating [bar]	160

## Tests / approvals

Pressure Equipment Directive	A possible classification to PED depends on the application and has to be carried out by the user / operator.
Safety instructions	The compatibility between medium and product material has to be checked in all applications.

## Mechanical data

Weight [g]	63
Materials	stainless steel (1.4404 / 316L)
Sensor connection	Ø 6 mm
Process connection	welding adapter Ø 24,7 mm

## Remarks

Pack quantity	1 pcs.
---------------	--------