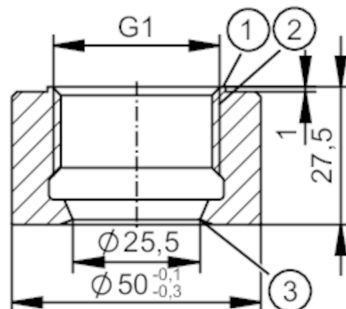




Welding adapter for process sensors

WELDING ADAPT G1 ST52-3



- 1 sealing area
- 2 G1 internal thread
- 3 sealing edge

Application

Pressure rating	[bar]	50
Note on pressure rating	for the connection sensor - adapter	

Tests / approvals

Pressure Equipment Directive	A possible classification to PED depends on the application and has to be carried out by the user / operator.	
Safety instructions	The compatibility between medium and product material has to be checked in all applications.	

Mechanical data

Weight	[g]	295.5
Materials (wetted parts)	steel (1.0570 / S355J2) surface characteristics : Ra<0,4 / Rz 4	
Sensor connection	G 1 sealing cone	
Process connection	welding adapter Ø 50 mm	

Remarks

Pack quantity	1 pcs.	
---------------	--------	--