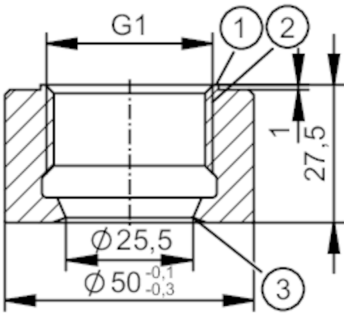


E30013



Welding adapter for process sensors

WELDING ADAPT G1 V4A



- 1 sealing area
- 2 G1 internal thread
- 3 sealing edge

CRN EC 1935/2004 EHEDG Tested FCM FDA

Application		
Pressure rating	[bar]	150
Note on pressure rating		for the connection sensor - adapter
MAWP (for applications according to CRN)	[bar]	150
Tests / approvals		
Pressure Equipment Directive		A possible classification to PED depends on the application and has to be carried out by the user / operator.
Safety instructions		The compatibility between medium and product material has to be checked in all applications.
Mechanical data		
Weight	[g]	300
Materials (wetted parts)		stainless steel (1.4404 / 316L) ; surface characteristics : Ra<0,4 / Rz 4
Sensor connection		G 1 sealing cone
Process connection		welding adapter Ø 50 mm
Remarks		
Pack quantity		1 pcs.