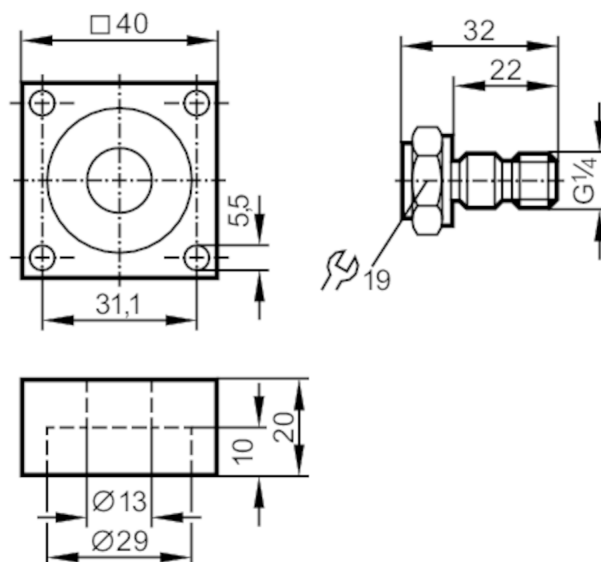




Flange adapter for process sensors

FLSH ADAPT PX 31,1



Application

Pressure rating [bar] 200

Tests / approvals

Pressure Equipment Directive

A possible classification to PED depends on the application and has to be carried out by the user / operator.

Safety instructions

The compatibility between medium and product material has to be checked in all applications.

Mechanical data

Weight [g] 119

Materials Sealing: NBR; flange: aluminium; hollow screw: brass

Sensor connection G 1/4

Process connection flange

Remarks

Pack quantity 1 pcs.