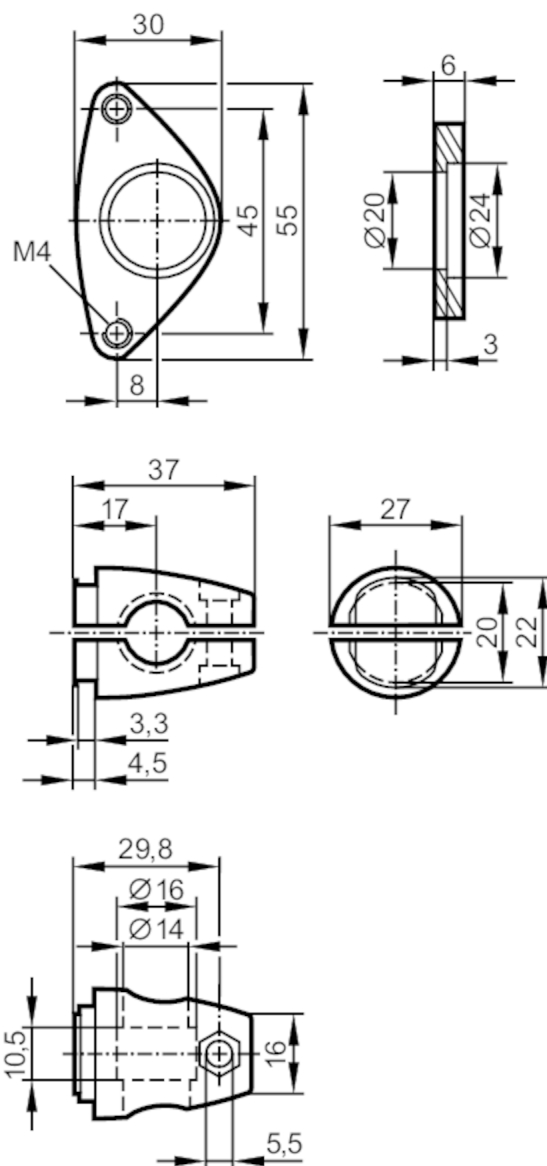


E2D112



Mounting set for vision sensors

MOUNTING SET VISION SENSOR



Application

Design

clamp mounting

Mechanical data

Weight

[g]

120.5

Type of mounting

Mounting rod; (Ø 14 mm)

Materials

fixture: stainless steel (1.4301 / 304); Clamp: stainless steel (1.4408)

Remarks

Pack quantity

1 pcs.