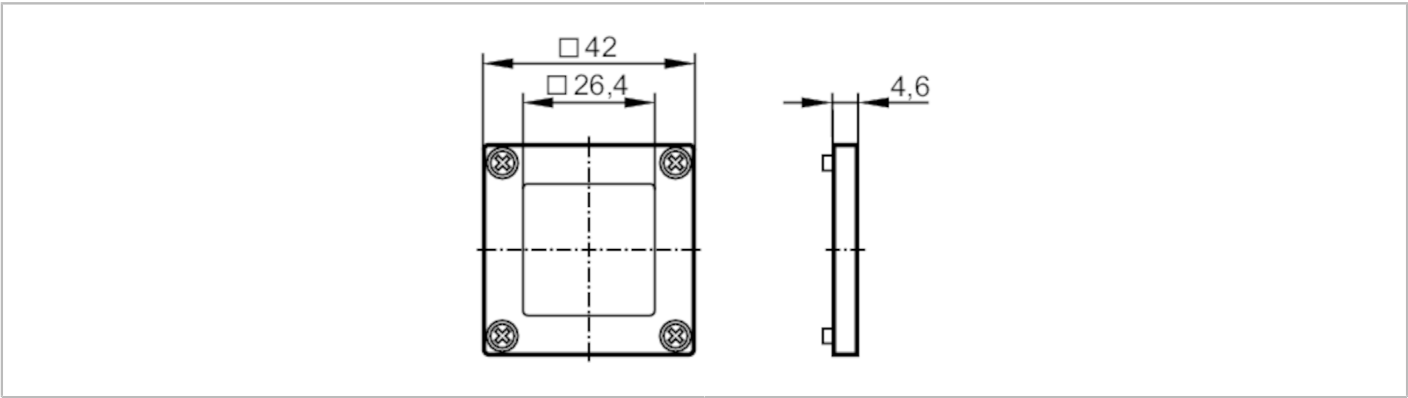




Protective cover

MASKING FRAME FOR O1D GLAS



Mechanical data		
Weight	[g]	39.5
Dimensions	[mm]	42 x 4.6 x 42
Materials	bezel: diecast zinc finish black; front pane: glass transparent and uncoloured; Sealing: FPM 75 ±5 Shore A; гвинти: stainless steel	
Tightening torque	[Nm]	0.6; (screws)
Аксессуары		
Items supplied	гвинти: 4 x M3 x 8	
Remarks		
Remarks	By attaching the protective cover the measured distance value can be changed by up to +5 mm.	
	This deviation influences the specified accuracy.	
	The repeatability remains unchanged.	
	By soiling or scratching the front pane the repeatability and accuracy of the sensor can deteriorate.	
Pack quantity	1 pcs.	