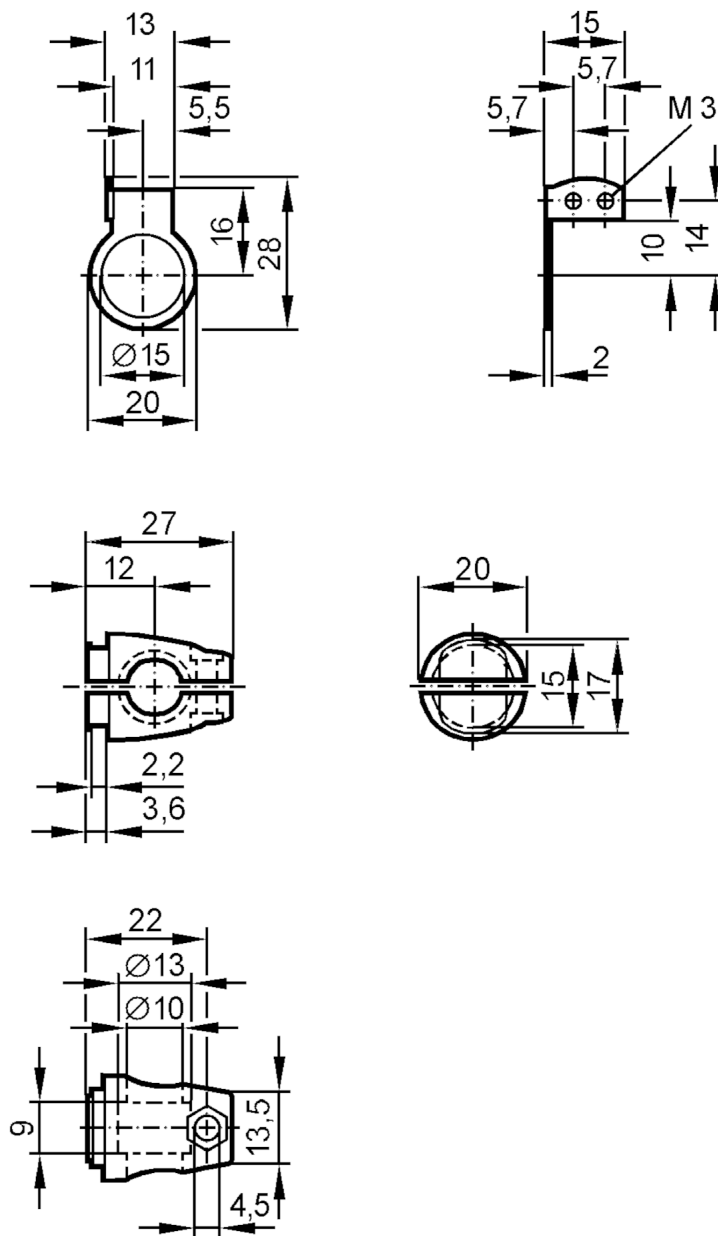


Mounting set for photoelectric sensors

SYSTEM COMPONENT OJ BOLT

Article no longer available - archive entry



Application

Design

clamp mounting, for front lens

Mechanical data

Weight

[g]

88.4

Type of mounting

free-standing; (M8)

Materials

Clamp: stainless steel (1.4408); fixture: stainless steel (1.4571/316Ti)

Аксессуары

Items supplied

screw: 1 x M8 x 40

Remarks

Pack quantity

1 pcs.