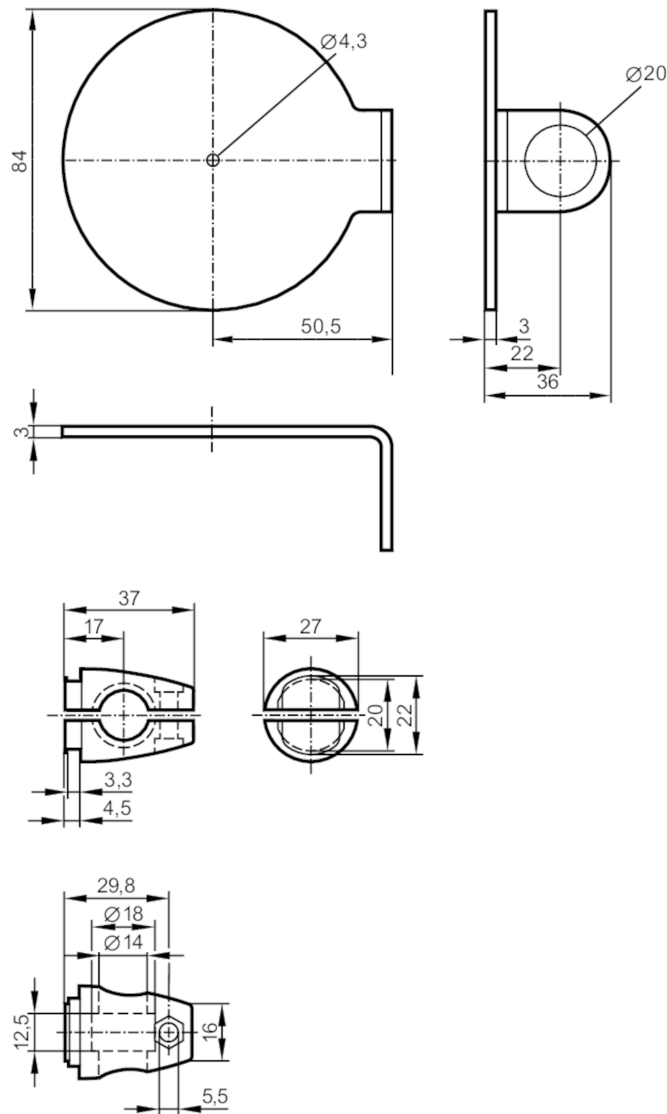


E20915



Mounting set for reflectors

SYSTEM COMPONENT REFL BOLT



Application

Design

clamp mounting, for reflector, Ø 80 mm

Mechanical data

Weight

[g]

401

Type of mounting

free-standing; (M12)

Materials

fixture: stainless steel (1.4571/316Ti); Clamp: stainless steel (1.4408)

Аксессуары

Items supplied

screw: 1 x M12 x 120

screw: 1 x M4 x 12

screw: 1 x M5 x 16

Remarks

Pack quantity

1 pcs.