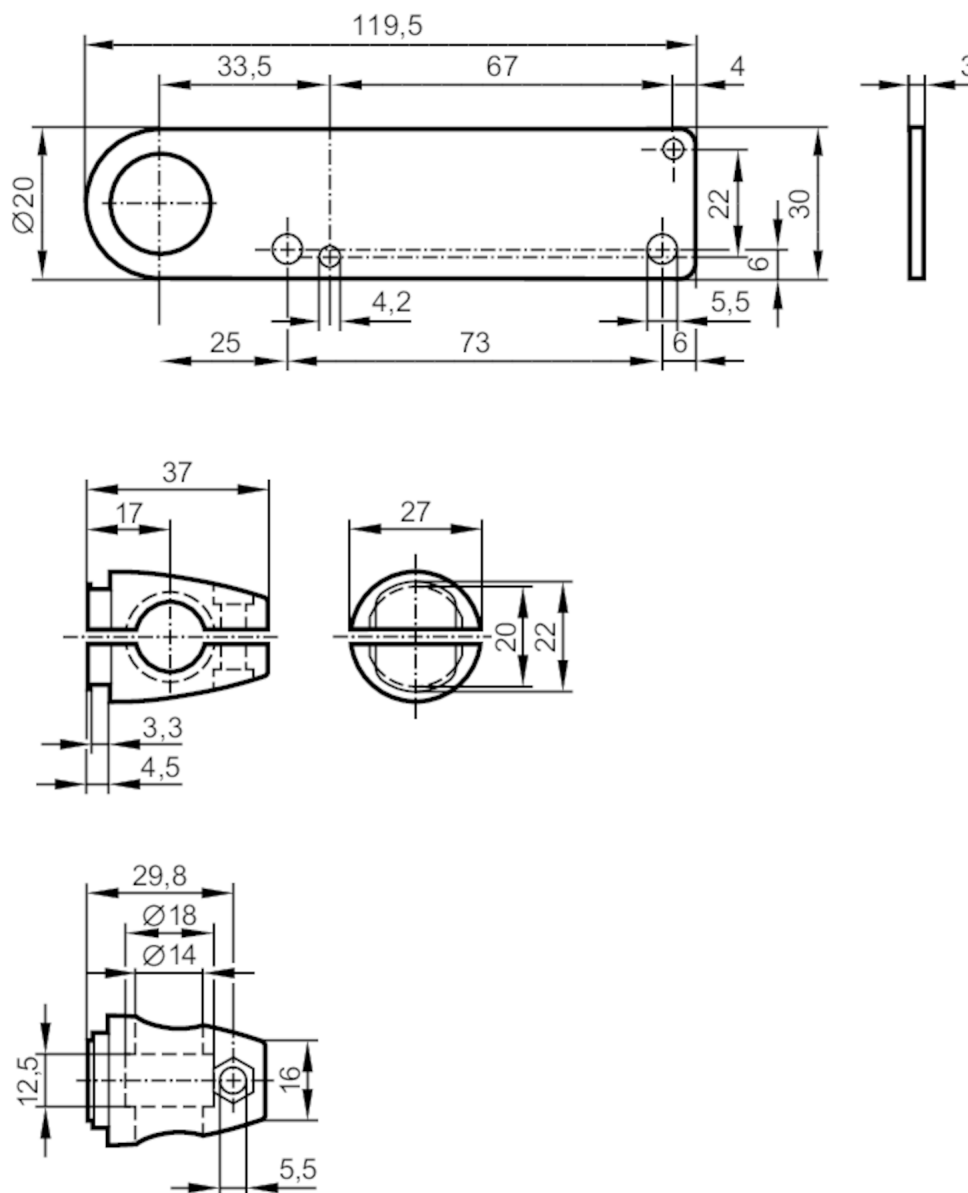


## Mounting set for photoelectric sensors

SYSTEM COMPONENT OA ROD

Article no longer available - archive entry



## Mechanical data

Type of mounting

Mounting rod; ( $\varnothing 14$  mm)

Materials

fixture: stainless steel (1.4571/316Ti ); Clamp: diecast zinc

## Remarks

Pack quantity

1 pcs.