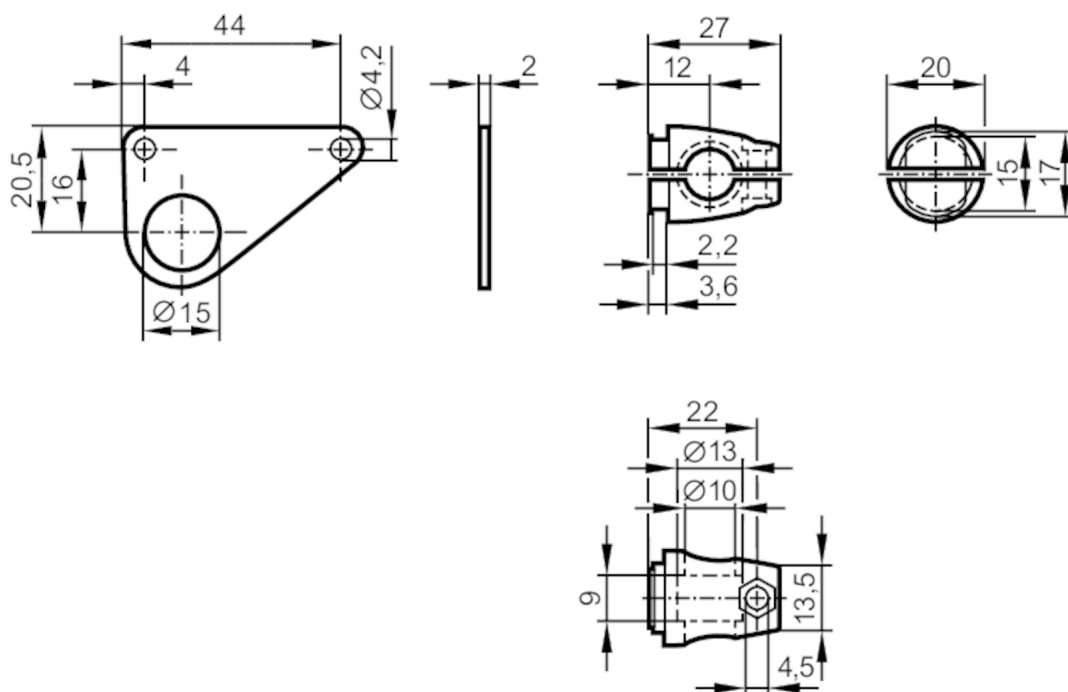




Mounting set for photoelectric sensors

SYSTEM COMPONENT OU BOLT



Application

Design clamp mounting

Mechanical data

Weight [g] 97.5
 Type of mounting free-standing; (M8)
 Materials fixture: stainless steel (1.4571/316Ti); Clamp: stainless steel (1.4408)

Аксессуары

Items supplied screw: 1 x M8 x 40

Remarks

Pack quantity 1 pcs.