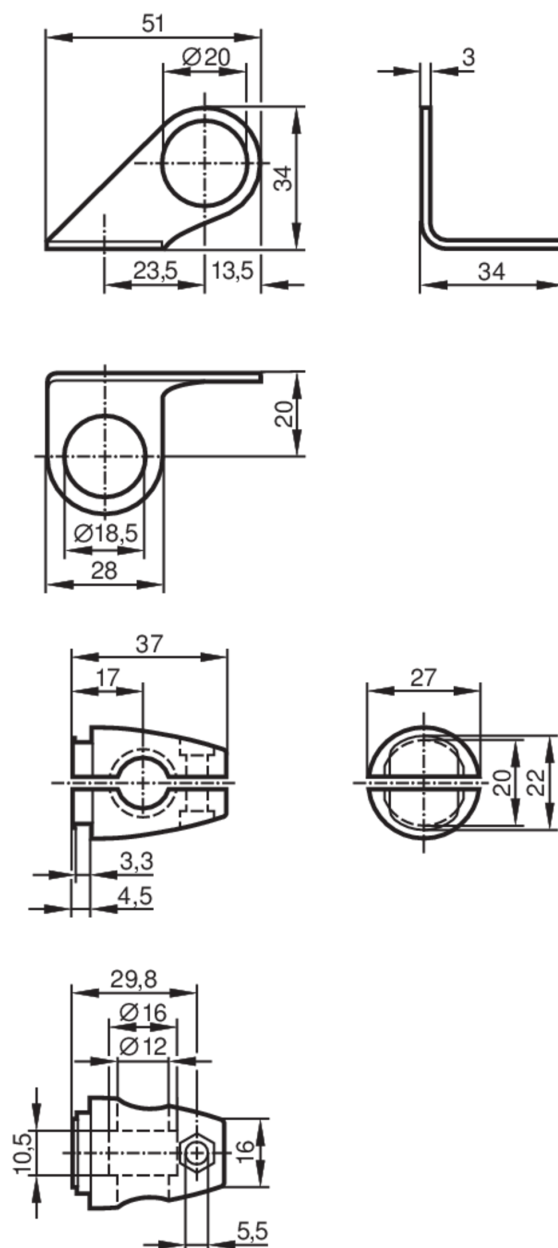


Mounting set for position sensors

SYSTEM COMPONENT M18 ROD



Application

Design

clamp mounting

Mechanical data

Weight [g]

117

Type of mounting

Mounting rod; ($\varnothing 12$ mm)

Dimensions [mm]

 $\varnothing 18.5$

Materials

fixture: stainless steel (1.4571/316Ti); Clamp: stainless steel (1.4408)

Remarks

Pack quantity

1 pcs.