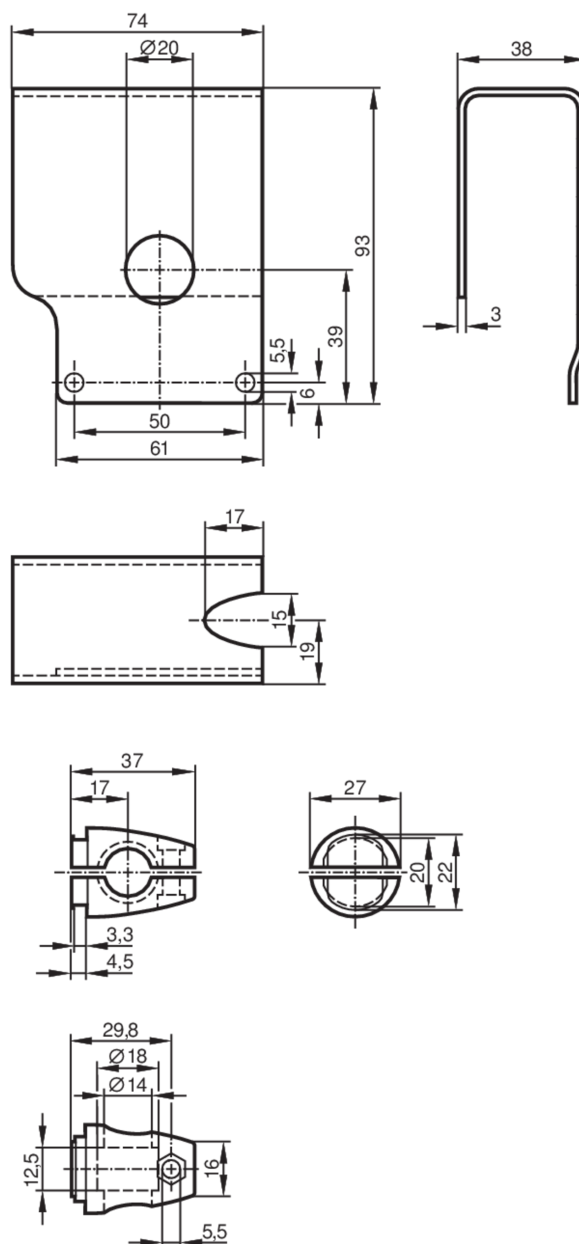




## Mounting set with protective cover for photoelectric sensors

MOUNTING SET OL LARGE ROD



### Application

Design

clamp mounting, with protective cover

### Mechanical data

Weight [g]

397

Type of mounting

Mounting rod; (Ø 14 mm)

Materials

fixture: stainless steel; Clamp: diecast zinc

### Remarks

Pack quantity

1 pcs.