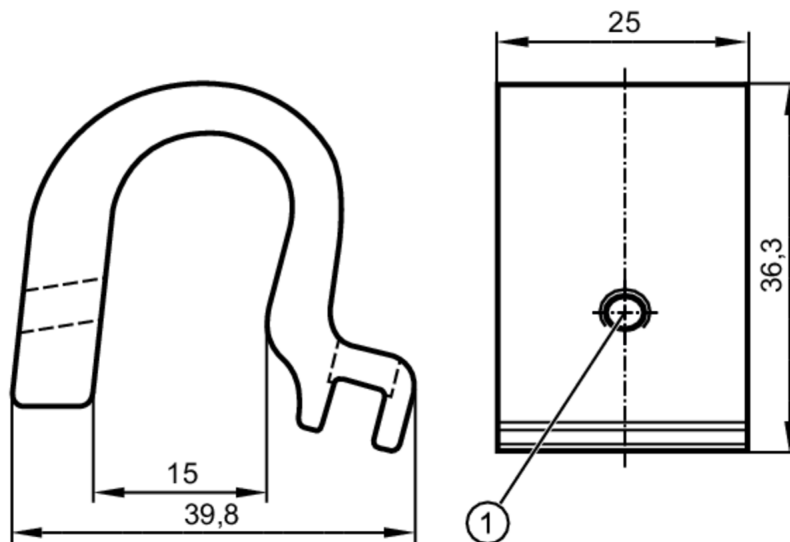


# E12234



## Mounting adapter for tie-rod/integrated profile cylinders

ADAPT TIE ROD/PROFILE



1 Mounting screw SW 2

### Application

Design	for types MKT, for types MKT
--------	------------------------------

### Mechanical data

Weight	[g]	35.4
Materials	Adapter: aluminium; screw: stainless steel	
Tightening torque	[Nm]	0.5
Clamping range	[mm]	13...15

### Remarks

Pack quantity	1 pcs.
---------------	--------