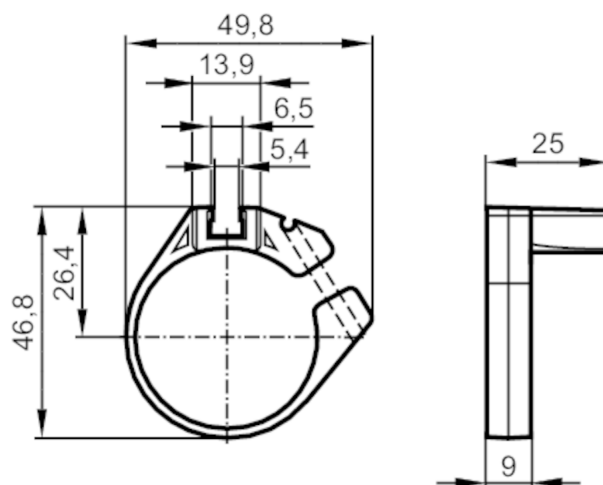


Clean-line cylinder mounting clamp for cylinder sensors

CLAMP FOR CLEAN LINE CYL 32/36



Application

Design

for types MKT

Operating conditions

Ambient temperature

[°C]

0...50

Mechanical data

Weight

[g]

11.5

Materials

mounting clamp: POM; fixture: aluminium; screw: stainless steel

Tightening torque

[Nm]

0.5; (Mounting screw)

Clamping range

[mm]

35...36

Piston diameter

[mm]

32

Аксессуары

Items supplied

socket head screws: 1 x SW2,5

Remarks

Pack quantity

1 pcs.

Diagrams and graphs

Installation

