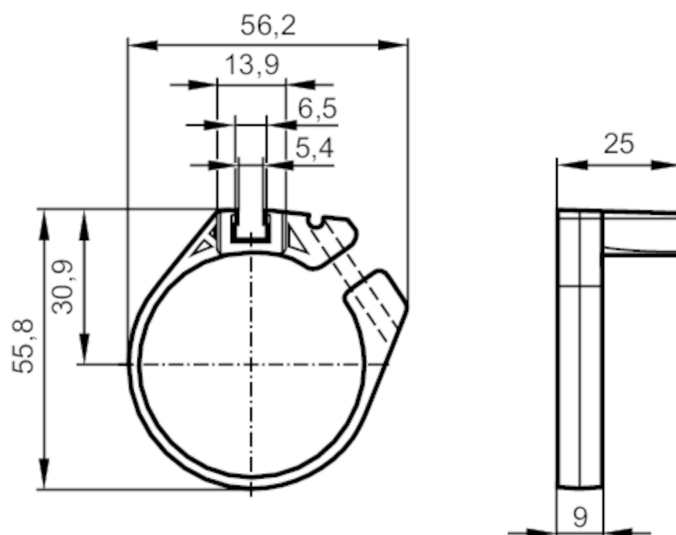


Clean-line cylinder mounting clamp for cylinder sensors

CLAMP FOR CLEAN LINE CYL 40/45



Application

Design for types MKT

Operating conditions

Ambient temperature [°C] 0...50

Mechanical data

Weight [g]	12.1
Materials	mounting clamp: POM; fixture: aluminium; screw: stainless steel
Tightening torque [Nm]	0.5; (Mounting screw)
Clamping range [mm]	44...45
Piston diameter [mm]	40

Аксессуары

Items supplied socket head screws: 1 x SW2,5

Remarks

Pack quantity 1 pcs.

Diagrams and graphs

Installation

