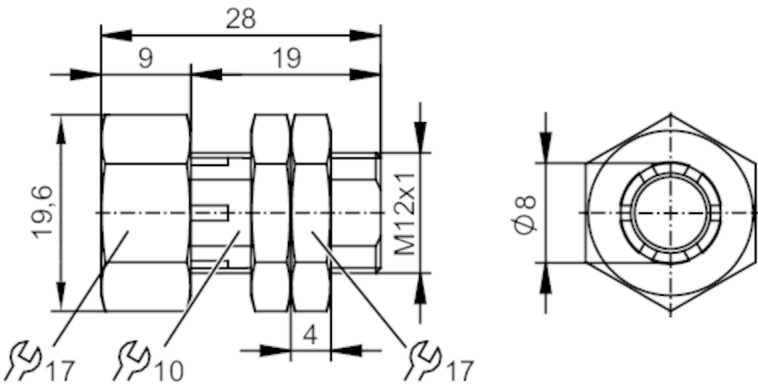


E12753



Mounting sleeve with end stop

FIXING/M8/NT/FE/COATED/END ST



Application	
Special feature	anti-spatter
Design	with end stop
Mechanical data	
Weight [g]	28.25
Installation instruction	align the sensing face of the sensor to the right (see scale drawing)
Dimensions [mm]	M12 x 1 / L = 28
Thread designation	M12 x 1
Inside diameter [mm]	8
Materials	steel galvanised; anti-spatter; lock nuts: steel galvanised; anti-spatter
Tightening torque [Nm]	5; (lock nuts: 10)
Аксессуары	
Items supplied	Nuts: 2
Remarks	
Pack quantity	1 pcs.
Diagrams and graphs	
Installation	