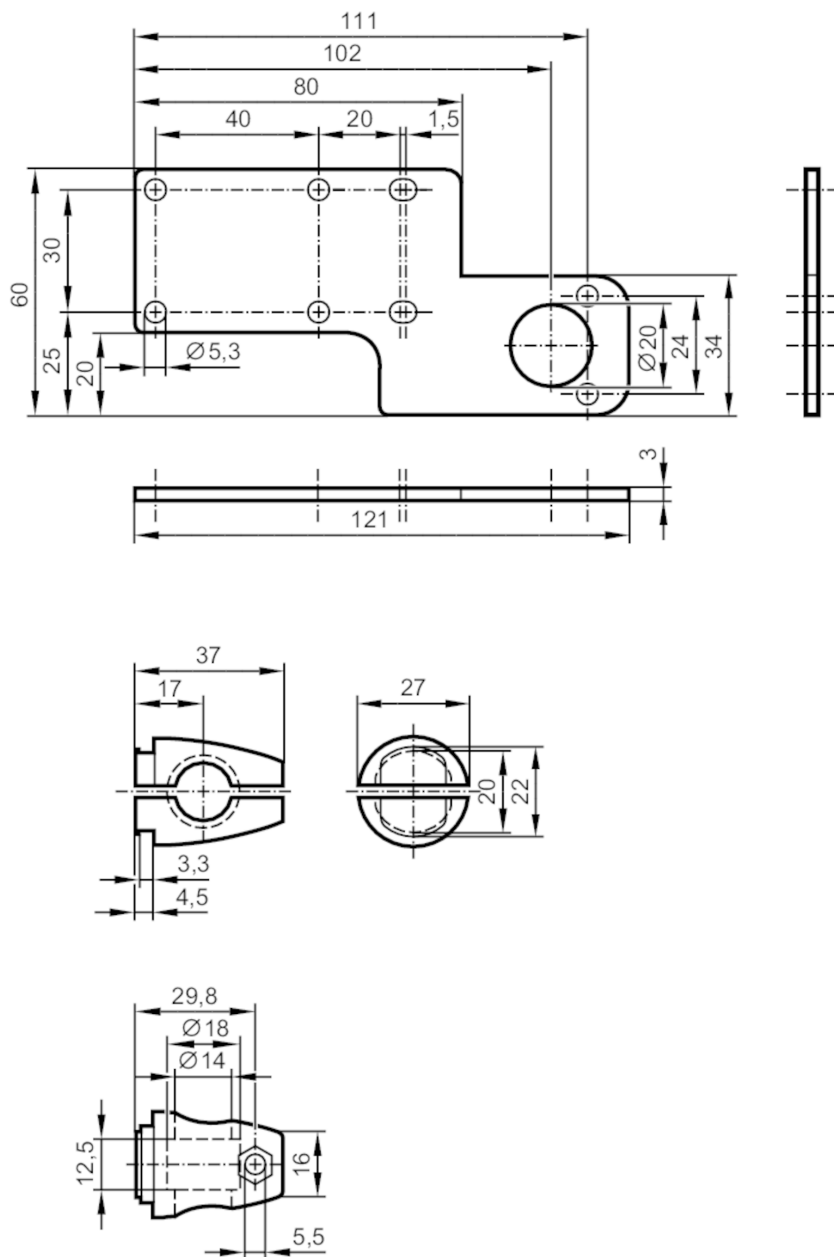




Mounting set for position sensors

MOUNTING BRACKET STRAIGHT



Application

Design

clamp mounting, straight, only for flush-mountable sensors

Mechanical data

Weight

[g]

175.5

Type of mounting

Mounting rod; (Ø 14 mm)

Materials

Clamp: stainless steel (1.4408); fixture: stainless steel (1.4571/316Ti)

Remarks

Pack quantity

1 pcs.