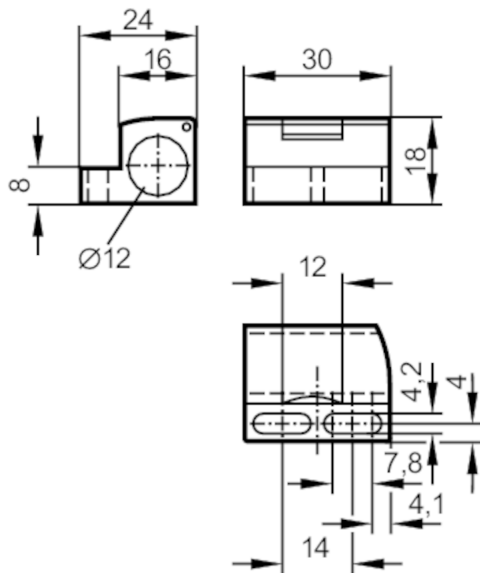


E11994



Mounting clamp for position sensors

MOUNTING CLAMP M12



| Application | | |
|----------------------|------|------------------------------|
| Design | | with end stop |
| Installation | | for sensors with 45° chamfer |
| Operating conditions | | |
| Ambient temperature | [°C] | -25...85 |
| Mechanical data | | |
| Weight | [g] | 9.2 |
| Dimensions | [mm] | 18 x 30 x 24 |
| Inside diameter | [mm] | 12 |
| Materials | | PC |
| Remarks | | |
| Pack quantity | | 1 pcs. |