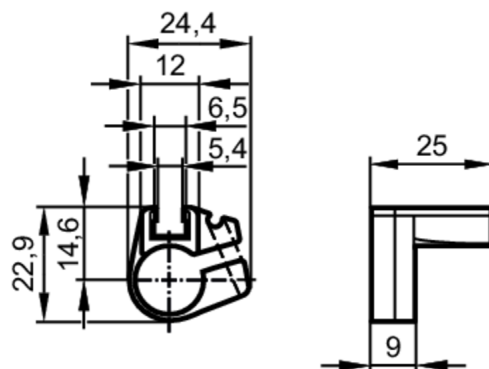


Clean-line cylinder mounting clamp for cylinder sensors

CLAMP FOR CLEAN LINE CYL D12



Application

Design for types MKT

Operating conditions

Ambient temperature [°C] 0...50

Mechanical data

Weight [g] 7.7

Materials mounting clamp: POM; fixture: aluminium; screw: stainless steel

Piston diameter [mm] 12

Аксессуары

Items supplied socket head screws: 1 x SW2,5

Remarks

Pack quantity 1 pcs.

Diagrams and graphs

Installation

