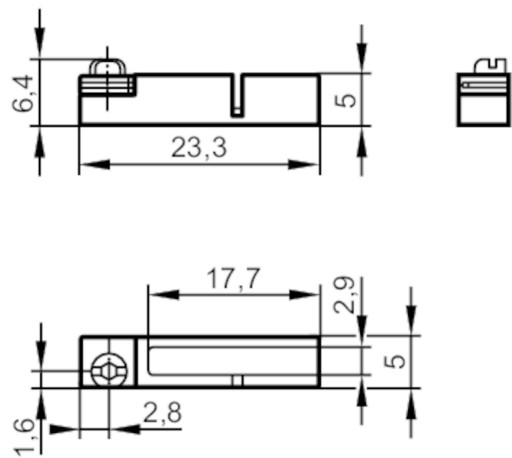


E11914



T-slot adapter for C-slot cylinder sensor

ADAPT C-SLOT IN T-SLOT SHORT



| Application | |
|------------------|---|
| Design | for types, for types MKC (C-slot cylinder sensor) for installation in T-slot cylinders, MKC |
| Mechanical data | |
| Weight [g] | 6.8 |
| Type of mounting | fixing: Screw with combined slot / hexagon socket head 2.5 |
| Dimensions [mm] | 6.4 x 23.3 x 5 |
| Materials | diecast zinc; Fixing element: stainless steel |
| Remarks | |
| Pack quantity | 1 pcs. |