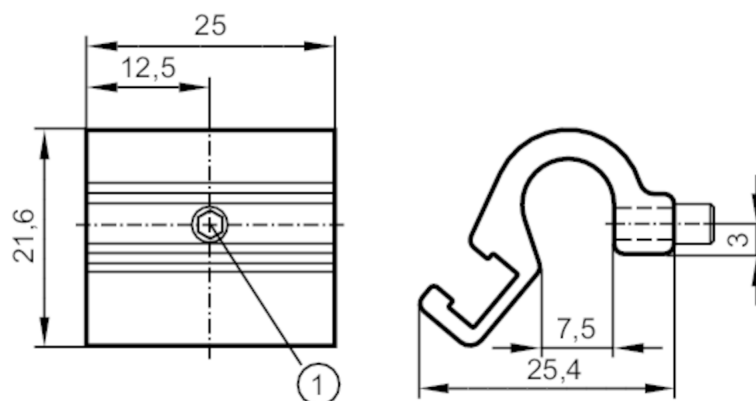




Mounting adapter for tie-rod/integrated profile cylinders

ADAPT TIE ROD CYL D5-7



1 Mounting screw SW 2

Application

Design for types MKT

Mechanical data

Weight	[g]	11.5
Materials	Adapter: aluminium; screw: stainless steel	
Clamping range	[mm]	5...7

Аксессуары

Items supplied Mounting screw: 1

Remarks

Pack quantity 1 pcs.