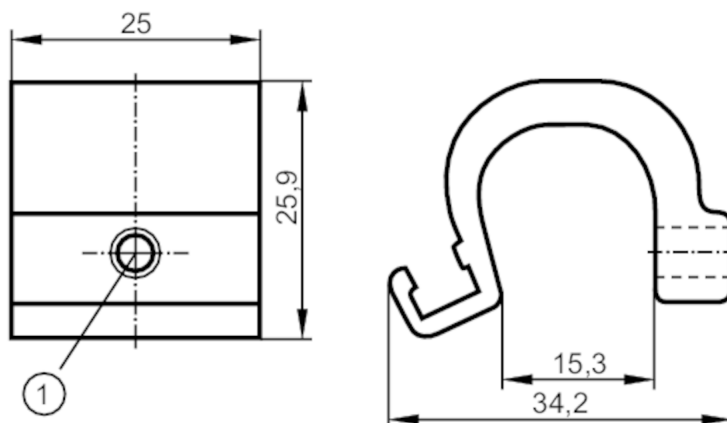


Mounting adapter for tie-rod/integrated profile cylinders

ADAPT TIE ROD/PROFILE/CYL



1 Mounting screw SW 2.5

Application

Design

for types MKT

Mechanical data

Weight

[g]

22

Dimensions

[mm]

25.9 x 25 x 34.2

Materials

Adapter: aluminium; screw: stainless steel

Clamping range

[mm]

9...15

Remarks

Pack quantity

1 pcs.