



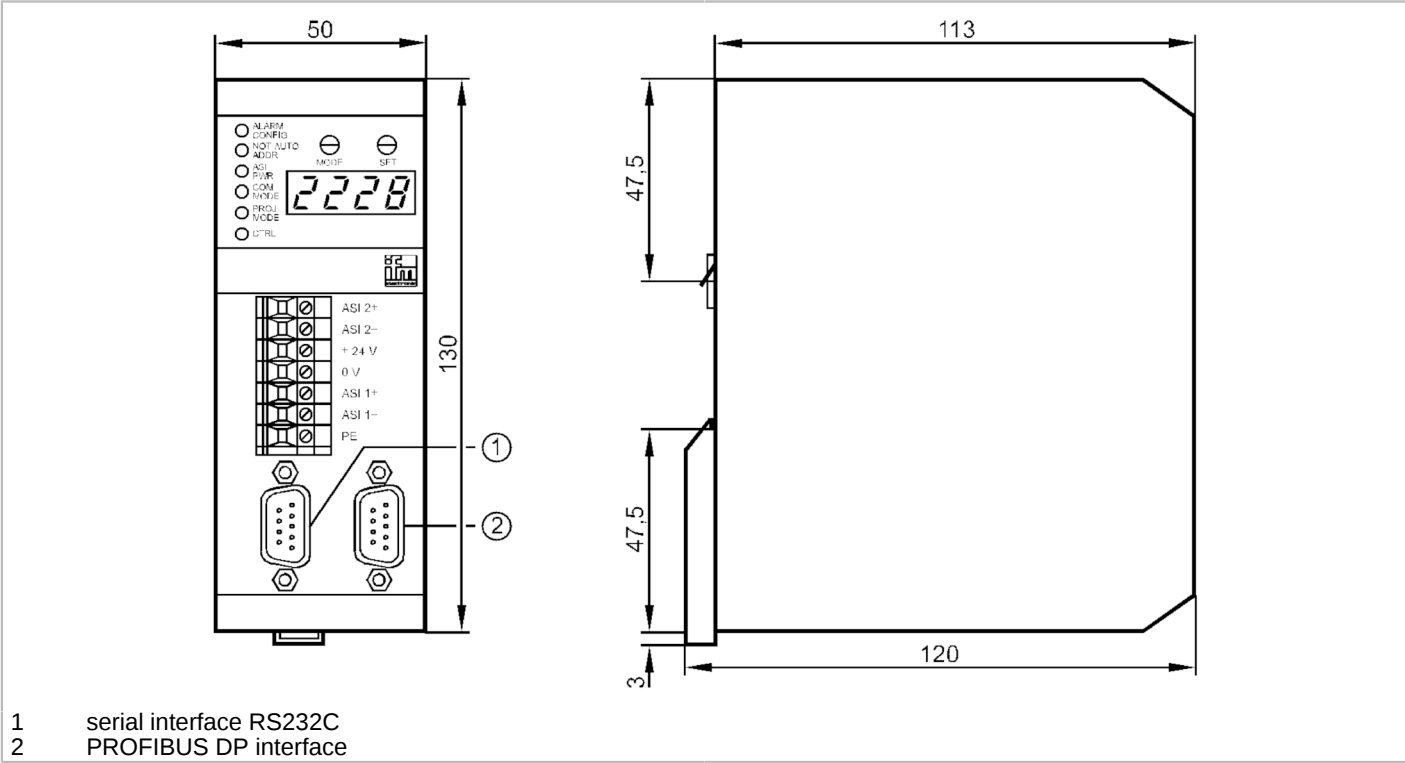
AS-Interface PROFIBUS DP gateway with PLC

Contr 2MSTR 1RS232C 1DP

Article no longer available - archive entry

Alternative articles: AC1028
When selecting an alternative article and accessories please note that technical data may differ!

Replacement units for Krones systems should be obtained directly from the company Krones.
This unit is not directly compatible.



Application		
Application		use as minicontroller and gateway
Electrical data		
Operating voltage	[V]	22...30 DC; (24 DC ; to PELV)
Insulation rating	[V]	500
Max. current consumption from AS-i	[mA]	80
Max. power consumption	[VA]	10
Electrical separation		yes
Outputs		
Electrical design		AS-i
Interfaces		
Communication interface		RS232
RS232		
Number of R232 interfaces		1
Transmission rate		4800...62400 Baud



AS-Interface PROFIBUS DP gateway with PLC

Contr 2MSTR 1RS232C 1DP

Connector type	SUB-D	
Usage type	programming	
Operating conditions		
Ambient temperature	[°C]	0...60
Storage temperature	[°C]	-20...70
Max. relative air humidity	[%]	95
Protection	IP 20	
AS-i classification		
AS-i profile	M1	
AS-i certificate	22501	
Mechanical data		
Housing	housing for DIN rail mounting	
Materials	aluminium	
Displays / operating elements		
Display	operation	2 x LED, red
		2 x LED, green
		2 x LED, yellow
Remarks		
Remarks	Replacement units for Krones systems should be obtained directly from the company Krones.	
	This unit is not directly compatible.	
Notes	Replacement units for Krones systems should be obtained directly from the company Krones.; This unit is not directly compatible.	
Pack quantity	1 pcs.	
Electrical connection		
screw terminals: 7 x		
Connection		

7	AS-i 2+
6	AS-i 2-
5	+ 24 V
4	0 V
3	AS-i 1+
2	AS-i 1-
1	PE